

OKLAHOMA CITY AIRPORT TRUST ACDBE PROGRAM

POLICY STATEMENT

Section 23.1, 23.23 Objectives/Policy Statement

The Oklahoma City Airport Trust (Trust) has established an Airport Concession Disadvantaged Business Enterprise (ACDBE) program in accordance with regulations of the U.S. Department of Transportation (DOT), 49 CFR Part 23. The Trust is a primary airport and has received federal funds authorized for airport development after January 1988 (authorized under Title 49 of the United States Code). The Trust has signed airport grant assurances that it will comply with 49 CFR Part 23.

The Trustees of the Oklahoma City Airport Trust are responsible for establishing the ACDBE policy. The Director of Airports is responsible for ensuring adherence to this policy. It is the expectation of the Trustees and the Director of Airports that all Department of Airports personnel shall adhere to the spirit as well as the letter of this policy.

It is the policy of the Trust to ensure that ACDBEs, as defined in Part 23, have an equal opportunity to receive and participate in concession opportunities. It is also our policy:

1. To ensure nondiscrimination in the award and administration of opportunities for concessions by airports receiving DOT financial assistance;
2. To create a level playing field on which ACDBEs can compete fairly for opportunities for concessions;
3. To ensure that our ACDBE program is narrowly tailored in accordance with applicable law;
4. To ensure that only firms that fully meet this part's eligibility standards are permitted to participate as ACDBEs at our airport;
5. To help remove barriers to the participation of ACDBEs in opportunities for concessions at our airport; and
6. To provide appropriate flexibility to our airport in establishing and providing opportunities for ACDBEs.

The Property Specialist in the Department of Airports has been designated as the ACDBE Liaison Officer (ACDBELO). In that capacity, the Property Specialist is responsible for implementing all aspects of the ACDBE program. Implementation of the ACDBE program is accorded the same priority as compliance with all other legal obligations incurred by the Trust in its financial assistance agreements with the Department of Transportation.

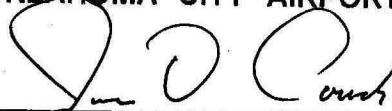
The ACDBELO has disseminated this policy statement to the Trust for their approval and to all of the components of our organization. It is on file at the Administrative Offices of the Department of Airports, 7100 Terminal Drive, Unit 937, Oklahoma City, OK. It will be distributed to members of the business community that perform or are

interested in performing work on concession-related contracts as each contracting opportunity arises.

APPROVAL RECOMMENDED

OKLAHOMA CITY AIRPORT TRUST


Mark Kranenburg, Director of Airports

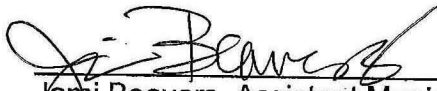

James D. Couch, Vice Chair/Trustee

ATTEST: (S E A L)


Frances Kersey, Trust Secretary



REVIEWED for form and legality


Jami Beavers, Assistant Municipal
Counselor/Attorney for the Trust

SUBPART A – GENERAL REQUIREMENTS

Section 23.1 Objectives

The objectives are found in the policy statement on the first page of this program.

Section 23.3 Definitions

The Trust will use terms in this program that have the meaning defined in Section 23.3 and Part 26 Section 26.5 where applicable.

Section 23.5 Applicability

The Trust is a primary airport and the sponsor of federal airport funds authorized for airport development after January 1988 that was authorized under Title 49 of the United States Code.

Section 23.9 Non-discrimination Requirements

The Trust will never exclude any person from participation in, deny any person the benefits of, or otherwise discriminate against anyone in connection with the award and performance of any concession agreement, management contract or subcontract, purchase or lease agreement, or other agreement covered by 49 CFR Part 23 on the basis of race, color, sex, or national origin.

In administering its DBE program, the Trust will not, directly or through contractual or other arrangements, use criteria or methods of administration that have the effect of defeating or substantially impairing accomplishment of the objectives of the ACDBE program with respect to individuals of a particular race, color, sex, or national origin.

The Trust acknowledges these representations are also in accordance with obligations contained in its Civil Rights, DBE, and ACDBE Airport grant assurances.

The Trust will include the following assurances in all concession agreements and management contracts it executes with any firm after April 21, 2005:

- (1) This agreement is subject to the requirements of the U.S. Department of Transportation's regulations, 49 CFR Part 23. The concessionaire or contractor agrees that it will not discriminate against any business owner because of the owner's race, color, national origin, or sex in connection with the award or performance of any concession agreement, management contract, or subcontract, purchase or lease agreement, or other agreement covered by 49 CFR Part 23.
- (2) The concessionaire or contractor agrees to include the above statements in any subsequent concession agreement or contract covered by 49 CFR Part 23, that it enters and cause those businesses to similarly include the statements in further agreements.

Section 23.11 Compliance and Enforcement

The Trust will comply with and is subject to the provisions of 49 CFR Part 26 (§§ 26.101 and 26.105 through 26.107).

The Trust will comply with this part or be subject to formal enforcement action under §26.105 or appropriate program sanctions, such as the suspension or termination of Federal funds, or refusal to approve projects, grants, or contracts until deficiencies are remedied. Program sanctions may include actions consistent with 49 U.S.C. §§ 47106(d), 47111(d), and 47122.

The Trust's compliance with all requirements of this part is enforced through the procedures of Title 49 of the United States Code, including 49 U.S.C. 47106(d), 47111(d), and 47122, and regulations implementing them.

Compliance reviews: The FAA may review the airport sponsor's compliance with this part at any time, including but not limited to, reviews of paperwork, on-site reviews, and review of the airport sponsor's monitoring and enforcement mechanism, as appropriate. The FAA Office of Civil Rights may initiate a compliance review based on complaints received.

Any person who knows of a violation of this part by the Trust may file a complaint under 14 CFR Part 16 with the Federal Aviation Administration Office of Chief Counsel.

The following enforcement actions apply to firms participating in the Trust's ACDBE program:

- (a) For a firm that does not meet the eligibility criteria of subpart C of this part and that attempts to participate as an ACDBE on the basis of false, fraudulent, or deceitful statements or representations or under circumstances indicating a serious lack of business integrity or honesty, the Department of Transportation (DOT) or the Federal Aviation Administration (FAA) may initiate suspension or debarment proceedings against the firm under 49 CFR Part 29.
- (b) For a firm that, in order to meet ACDBE goals or other DBE program requirements, uses or attempts to use, on the basis of false, fraudulent, or deceitful statements or representations or under circumstances indicating a serious lack of business integrity or honesty, another firm that does not meet the eligibility criteria of subpart C of this part, DOT or FAA may initiate suspension or debarment proceedings against the firm under 49 CFR Part 29.
- (c) In a suspension or debarment proceeding brought under paragraph (a) or (b) of this section, the FAA may consider the fact that a purported ACDBE has been certified. However, such certification does not preclude DOT from determining that the purported ACDBE, or another firm that has used or attempted to use it to meet ACDBE goals, should be suspended or debarred.

- (d) DOT may take enforcement action under 49 CFR Part 31, Program Fraud and Civil Remedies, against any participant in the ACDBE program whose conduct is subject to such action under 49 CFR Part 31.
- (e) DOT may refer to the Department of Justice, for prosecution under 18 U.S.C. §§ 1001 or other applicable provisions of law, any person who makes a false or fraudulent statement in connection with participation of an ACDBE in the Trust's ACDBE program or otherwise violates applicable Federal statutes.

SUBPART B – ACDBE Programs

Section 23.21 ACDBE Program Updates

Since the Trust is a small hub primary airport, we are required to have an ACDBE program. As a condition of eligibility for FAA financial assistance, the Trust will submit its ACDBE program and overall goals to FAA according to the following schedule:

Type of Airport	Initial Program and Goal Due	Second Goal Due	Subsequent Goals Due
Large/Medium Hub Primary	January 1, 2006	October 1, 2008	Every 3 years on October 1
Small Hub Primary	October 1, 2006	October 1, 2009	
Nonhub Primary	October 1, 2007	October 1, 2010	

Until our new ACDBE program is submitted and approved, we will continue to implement our concessions DBE program that was in effect before April 21, 2005, except with respect to any provision that is contrary to 49 CFR Part 23.

This ACDBE program will be implemented at Will Rogers World Airport (Airport).

When the Trust makes significant changes to its ACDBE program, we will provide the amended program to the FAA for approval prior to implementing the changes.

Section 23.23 Administrative Provisions

Policy Statement: The Trust is committed to operating its ACDBE program in a nondiscriminatory manner. The Trust's Policy Statement is elaborated on the first page of this program.

ACDBE Liaison Officer (ACDBELO): We have designated the following individual as our ACDBELO: Charlene Kirk, 7100 Terminal Drive, Unit 937, Oklahoma City, OK 73059-0937, (405) 680-3267, charlene.kirk@okc.gov.

In that capacity, the ACDBELO is responsible for implementing all aspects of the ACDBE program and ensuring that the Trust complies with all provisions of 49 CFR Part 23. The ACDBELO has direct, independent access to the Director of Airports concerning ACDBE program matters. An organizational chart displaying the ACDBELO's position in the organization is found in Attachment 1 to this program.

The ACDBELO is responsible for developing, implementing, and monitoring the ACDBE program, in coordination with other appropriate officials. The duties and responsibilities include the following:

1. Gathers and reports statistical data and other information as required by FAA or DOT.
2. Reviews third party contracts and purchase requisitions for compliance with this program.
3. Works with all departments to set overall annual goals.
4. Ensures that bid notices and requests for proposals are available to ACDBEs in a timely manner.
5. Identifies contracts and procurements so that ACDBE goals are included in solicitations (both race-neutral methods and contract specific goals).
6. Analyzes the Trust's progress toward attainment and identifies ways to improve progress.
7. Participates in pre-bid/proposal meetings.
8. Advises the CEO/governing body on ACDBE matters and achievement.
9. Plans and participates in ACDBE training seminars/conferences.
10. Acts as liaison to the Uniform Certification Program in Oklahoma.
11. Provides outreach to ACDBEs and community organizations to advise them of opportunities.

Directory: The Trust, through the Oklahoma Uniform Certification Program (UCP), has access to a directory identifying all firms eligible to participate as ACDBEs. The Directory lists the firm's name, address, phone number, date of the most recent certification, and the type of work the firm has been certified to perform as an ACDBE. The UCP revises the Directory monthly, and it is available at <http://www.okladot.state.ok.us/>. The Directory may be found in Attachment 2 to this program document.

Section 23.25 Ensuring Nondiscriminatory Participation of ACDBEs

The Trust will take the following measures to ensure nondiscriminatory participation of ACDBEs in concession, and other covered activities: (23.25(a))

The Trust will seek ACDBE participation in all types of concession activities, rather than concentrating participation in one category or a few categories to the exclusion of others. (23.25(c))

The Trust's overall goal methodology, a description of the race-neutral measures it will take to meet the goals, is described in Section 23.25 and Attachment 4 of this plan. The goals are set consistent with the requirements of Subpart D. (23.25(b), (d))

When the Trust projects that race-neutral measures, standing alone, are not sufficient to meet an overall goal, it will use race-conscious measures as described in Section 23.25 (e) (1-2) and Attachment 4 and 5 of this plan. (23.25(e))

The Trust will require businesses subject to ACDBE goals at the Airport (except car rental companies) to make good faith efforts to explore all available options to meet goals, to the maximum extent practicable, through direct ownership arrangements with ACDBEs. The Trust will not use set-asides or quotas as a means of obtaining ACDBE participation. (23.25 (f)(g))

Section 23.27 Reporting

The Trust will retain sufficient basic information about its ACDBE program implementation, ACDBE certification, and the award and performance of agreements and contracts to enable the FAA to determine the compliance with Part 23. This data will be retained for a minimum of 3 years following the end of the concession agreement or other covered contract:

Beginning March 1, 2006, we will submit to the FAA Regional Civil Rights Office an annual ACDBE participation report on the form in Appendix A of Part 23.

Section 23.29 Compliance and Enforcement Procedures

The Trust will undertake the following monitoring and enforcement mechanisms to ensure compliance with 49 CFR Part 23:

1. We will bring to the attention of the Department of Transportation any false, fraudulent, or dishonest conduct in connection with the program, so that DOT can take the steps (e.g., referral to the Department of Justice for criminal prosecution, referral to the DOT Inspector General, action under suspension and debarment or Program Fraud and Civil Penalties rules) provided in 26.107.
2. We will consider similar action under our own legal authorities, including responsibility determinations in future contracts. We have listed the contract remedies available to us in the events of non-compliance with the ACDBE regulation by a participant in our procurement activities. See Attachment 3.
3. We will also implement a monitoring and enforcement mechanism to ensure that work committed to ACDBEs at contract award is actually performed by the ACDBEs. This mechanism will provide for a running tally of actual ACDBE attainments (e.g., payment actually made by ACDBE firms), including a means of comparing these attainments to commitments. This will be accomplished by communication with the ACDBEs and making any observations or obtaining any documentation deemed necessary to verify the ACDBE's actual participation.
4. In our reports of ACDBE participation to FAA, we will show both commitments and attainments, as required by the DOT reporting form.

SUBPART C – CERTIFICATION AND ELIGIBILITY

Section 23.31 We are a member of a Unified Certification Program (UCP) administered by The Oklahoma Department of Transportation, which will make certification decisions on behalf of the Trust for ACDBEs, and which uses the procedures and standards of Part 26, except as provided in 23.31, for certification of ACDBEs to participate in our concessions program, and such standards are incorporated herein by reference.

The UCP's directory of eligible DBEs specifies whether a firm is certified as a DBE for purposes of Part 26, or ACDBE for purposes of Part 23.

Prior to entering into a new contract, extension, or option with a currently certified ACDBE, we will review their eligibility by checking the UCP's list. Our plan for this review process will be to review each new DBE, through the UCP's listing, as they contract or propose to contract with us.

We will presume that a firm that is certified as a DBE under Part 26 is eligible to participate as an ACDBE. However, before accepting the certification of such a firm, we will ensure that the disadvantaged owners of a DBE certified under Part 26 are able to control the firm with respect to its activity in our concessions program. We understand that the UCP is not obligated to certify a Part 26 DBE as an ACDBE if the firm does not do work relevant to a concessions program. (23.37)

We acknowledge that a prime contractor includes a firm holding a prime contract with an airport concessionaire to provide goods or services to the concessionaire or a firm holding a prime concession agreement with a recipient. We recognize that the eligibility of Alaska Native Corporations (ANC) owned firms for purposes of Part 23 is governed by Part 26 section 26.73(h). (23.39(c)(d))

We will use the certification standards, as applied by the UCP, of Part 23 to determine the ACDBE eligibility of firms that provide goods and services to concessionaires. (23.39(i))

In instances when the eligibility of a concessionaire is removed after the concessionaire has entered into a concession agreement because the firm exceeded the size standard or the owner has exceeded the PNW standard, and the firm in all other respects remains an eligible DBE, we may continue to count the concessionaire's participation toward ACDBE goals during the remainder of the current concession agreement. We will not count the concessionaire's participation toward ACDBE goals beyond the termination date for the concession agreement in effect at the time of the decertification. (23.39(e))

SUBPART D – GOALS, GOOD FAITH EFFORTS, AND COUNTING

Section 23.41 Basic Overall Goal Requirement

The Trust will establish two separate overall ACDBE goals, one for car rentals and another for concessions other than car rentals. The overall goals will cover a three-year period, and the Trust will review the goals annually to make sure the goal continues to fit the current circumstances. The Trust will report any significant overall goal adjustments to the FAA.

If the average annual concession revenues for car rentals over the preceding 3 years do not exceed \$200,000, we need not submit an overall goal for car rentals. Likewise, if the average annual concession revenues for concessions other than car rentals over the preceding 3 years do not exceed \$200,000, we need not submit an overall goal for concessions other than car rentals. We understand that “revenue” means total revenue generated by concessions, not the fees received by the Airport from concessionaires.

The Trust's overall goals will provide for participation by all certified ACDBEs and will not be subdivided into group-specific goals.

Section 23.43 Consultation in Goal Setting

The Trust consults with stakeholders before submitting the overall goals to the FAA. Stakeholders will include, but not be limited to, minority and women’s business groups, community organizations, trade associations representing concessionaires currently located at the Airport, as well as existing concessionaires themselves, and other officials or organizations which could be expected to have information concerning the availability of disadvantaged businesses, the effects of discrimination on opportunities for ACDBEs, and the Trust’s efforts to increase participation of ACDBEs.

When submitting our overall goals, we will identify the stakeholders that we consulted with and provide a summary of the information obtained from the stakeholders.

Section 23.45 Overall Goals

The Trust is a small hub primary airport. As a condition of eligibility for FAA financial assistance, the Trust will submit its overall goals according to the following schedule:

Type of Airport	Initial Program and Goal Due	Second Goal Due	Subsequent Goals Due
Large/Medium Hub Primary	January 1, 2006	October 1, 2008	Every 3 years on October 1
Small Hub Primary	October 1, 2006	October 1, 2009	
Nonhub Primary	October 1, 2007	October 1, 2010	

If a new concession opportunity arises at a time that falls between the normal submission dates above and the estimated average of annual gross revenues are anticipated to be \$200,000 or greater, the Trust will submit an appropriate adjustment to the overall goal to FAA for approval at least six months before executing the new concession agreement.

The Trust will establish overall goals in accordance with the 2-Step process as specified in section 23.51. After determining the total gross receipts for the concession activity, the first step is to determine the relative availability of ACDBEs in the market area, or the “base figure.” The second step is to examine all relevant evidence reasonably available in the Trust’s jurisdiction to determine if an adjustment to the Step 1 “base figure” is necessary so that the goal reflects as accurately as possible the ACDBE participation the Trust would expect in the absence of discrimination. Evidence may include, but is not limited to past participation by ACDBEs, a disparity study, evidence from related fields that affect ACDBE opportunities to form, grow, and compete (such as statistical disparities in ability to get required financing, bonding, insurance; or data on employment, self-employment, education, training, and union apprenticeship).

A description of the methodology to calculate the overall goal for car rentals, the goal calculations, and the data we relied on can be found in Attachment 4 to this program.

A description of the methodology to calculate the overall goal for concessions other than car rentals, the goal calculations, and the data we relied on can be found in Attachment 5 to this program.

Projection of Estimated Race-Neutral & Race-Conscious Participation (23.45(f), 23.25(d-e))

The breakout of estimated race-neutral and race-conscious participation can be found with the goal methodology in Attachments 4 and 5 to this program. This section of the program will be reviewed annually when the goal calculation is reviewed under 23.41(c).

Concession Specific Goals (23.25 (c)(e)(1)(iv))

The Trust will use concession specific goals to meet any portion of the overall goals that the Trust does not project being able to meet using race-neutral means. Concession specific goals are established so that, over the period to which the overall goals apply, they will cumulatively result in meeting any portion of our overall goal that is not projected to be met through the use of race-neutral means.

We will establish concession specific goals only on those concessions that have direct ownership arrangements (except car rentals), sublease, or subcontracting possibilities. We will require businesses subject to ACDBE goals at the Airport (except car rental companies) to make good faith efforts to explore all available options to meet goals, to the maximum extent practicable, through direct ownership arrangements with DBEs (23.25 (f)).

We need not establish a concession specific goal on every such concession, and the size of concession specific goals will be adapted to the circumstances of each such concession (e.g., type and location of concession, availability of ACDBEs).

If the objective of a concession specific goal is to obtain ACDBE participation through direct ownership with an ACDBE, the Trust will calculate the goal as a percentage of the total estimated annual gross receipts from the concession. (23.25(e)(1)(i))

If the concession specific goal applies to purchases and/or leases of goods and services, the Trust will calculate the goal by dividing the estimated dollar value of such purchases and/or leases from ACDBEs by the total estimated dollar value of all purchases to be made by the concessionaire. (23.25(e)(1)(ii))

Good Faith Efforts on Concession Specific Goals (23.25(e)(1)(iii), (iv))

To be eligible to be awarded a concession that has a concession specific goal; bidders/offerors must make good faith efforts to meet the goal. A bidder/offeror may do so either by obtaining enough ACDBE participation to meet the goal or by documenting that it made sufficient good faith efforts to do so. (23.25(e)(1)(iv)). Examples of good faith efforts are found in Appendix A to 49 CFR Part 26. The procedures applicable to 49 CFR Sections 26.51 and 26.53 regarding contract goals apply to the Trust's concession specific goals. Specifically,

Demonstration of good faith efforts (26.53(a) & (c))

The management staff of the Airport, as assigned by the Director of Airports based upon their expertise in a particular type of concession is responsible for determining whether a concessionaire who has not met the concession specific goal has documented sufficient good faith efforts to be regarded as responsive.

The Trust will ensure that all information is complete and accurate and adequately documents the bidder/offeror's good faith efforts before committing to the concession agreement with the bidder/offeror.

Information to be submitted (26.53(b))

The Trust treats bidder/offeror's compliance with good faith effort requirements as a matter of responsiveness.

Each solicitation for which a concession specific goal has been established will require the concessionaires to submit the following information:

1. The names and addresses of ACDBE firms or ACDBE suppliers of goods and services that will participate in the concession;
2. A description of the work that each ACDBE will perform;
3. The dollar amount of the participation of each ACDBE firm/supplier participating;

4. Written and signed documentation of commitment to use an ACDBE whose participation it submits to meet a contract goal;
5. Written and signed confirmation from the ACDBE that it is participating in the concession as provided in the prime concessionaire's commitment; and
6. If the contract goal is not met, evidence of good faith efforts.

Administrative reconsideration (26.53(d))

Within ten (10) days of being informed by the Trust that it is not responsive because it has not documented sufficient good faith efforts, a concessionaire may request administrative reconsideration. Concessionaire should make this request in writing to the following reconsideration official: Mark Kranenburg, 7100 Terminal Drive, Unit 937, Oklahoma City, OK 73159, 405-680-3260, mark.kranenburg@okc.gov. The reconsideration official will not have played any role in the original determination that the concessionaire did not document sufficient good faith efforts.

As part of this reconsideration, the concessionaire will have the opportunity to provide written documentation or argument concerning the issue of whether it met the goal or made adequate good faith efforts to do so. The concessionaire will have the opportunity to meet in person with our reconsideration official to discuss the issue of whether it met the goal or made adequate good faith efforts to do so. We will send the concessionaire a written decision on reconsideration, explaining the basis for finding that the concessionaire did or did not meet the goal or make adequate good faith efforts to do so. The result of the reconsideration process is not administratively appealable to the Department of Transportation.

Good Faith Efforts when an ACDBE is replaced on a concession (26.53(f))

The Trust will require a concessionaire to make good faith efforts to replace an ACDBE that is terminated or has otherwise failed to complete its concession agreement, lease, or subcontract with another certified ACDBE, to the extent needed to meet the concession specific goal. We will require the concessionaire to notify the ACDBELO immediately of the ACDBE's inability or unwillingness to perform and provide reasonable documentation.

In this situation, we will require the concessionaire to obtain our prior approval of the substitute ACDBE and to provide copies of new or amended subcontracts, or documentation of good faith efforts.

If the concessionaire fails or refuses to comply in the time specified, our contracting office will follow the procedures outlined in each agreement, which requires written notice of a default by the concessionaire. If the concessionaire still fails to comply, the contracting officer may issue a termination for default proceeding.

Sample Proposal/Bid Specification:

The requirements of 49 CFR Part 23, regulations of the U.S. Department of Transportation, applies to this concession. It is the policy of the Trust to practice nondiscrimination based on race, color, sex, or national origin in the award or performance of this contract. All firms qualifying under this solicitation are encouraged to submit bids/proposals. Award of this concession will be conditioned upon satisfying the requirements of this proposal/bid specification. These requirements apply to all concessions firms and suppliers, including those who qualify as an ACDBE. An ACDBE concession specific goal of ____ percent of annual gross receipts has been established for this concession. The concession firm shall make good faith efforts, as defined in Appendix A, 49 CFR Part 26 (Attachment 6), to meet the concession specific goal for ACDBE participation in the performance of this concession.

The concession firm will be required to submit the following information: (1) the names and addresses of ACDBE firms and suppliers that will participate in the concession, (2) a description of the work that each ACDBE will perform; (3) the dollar amount of the participation of each ACDBE firm participating; (4) written and signed documentation of commitment to use an ACDBE whose participation it submits to meet a contract goal; (5) written and signed confirmation from the ACDBE that it is participating in the concession as provided in the prime concessionaire's commitment; and (6) if the contract goal is not met, evidence of good faith efforts.

Section 23.53 Counting ACDBE Participation for Car Rental Goals

We will count ACDBE participation toward overall goals for car rentals as provided in 49 CFR 23.53.

Section 23.55 Counting ACDBE Participation for Concessions Other than Car Rentals

We will count ACDBE participation toward overall goals other than car rental as provided in 49 CFR 23.55.

Section 23.61 Quotas or Set-asides

We will not use quotas or set-asides as a means of obtaining ACDBE participation.

SUBPART E – OTHER PROVISIONS

Section 23.71 Existing Agreements

We will assess potential for ACDBE participation when an extension or option to renew an existing agreement is exercised, or when a material amendment is made. We will

use any means authorized by Part 23 to obtain a modified amount of ACDBE participation in the renewed or amended agreement.

Section 23.75 Long-Term Exclusive Agreements

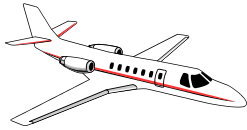
We will not enter into a long-term exclusive agreement for concessions without prior approval of the FAA Regional Civil Rights Office. We understand that a “long-term” agreement is one having a term of longer than 5 years. We understand that an “exclusive” agreement is one in which an entire category of a particular business opportunity is limited to a single business entity. If special, local circumstances exist that make it important to enter into a long-term and exclusive agreement, we will submit detailed information to the FAA Regional Civil Rights Office for review and approval.

Section 23.79 Geographic Preferences

We will not use a “local geographic preference,” i.e., any requirement that gives an ACDBE located in one place (e.g., the City of Oklahoma City) an advantage over ACDBEs from other places in obtaining business as, or with, a concession at the Airport.

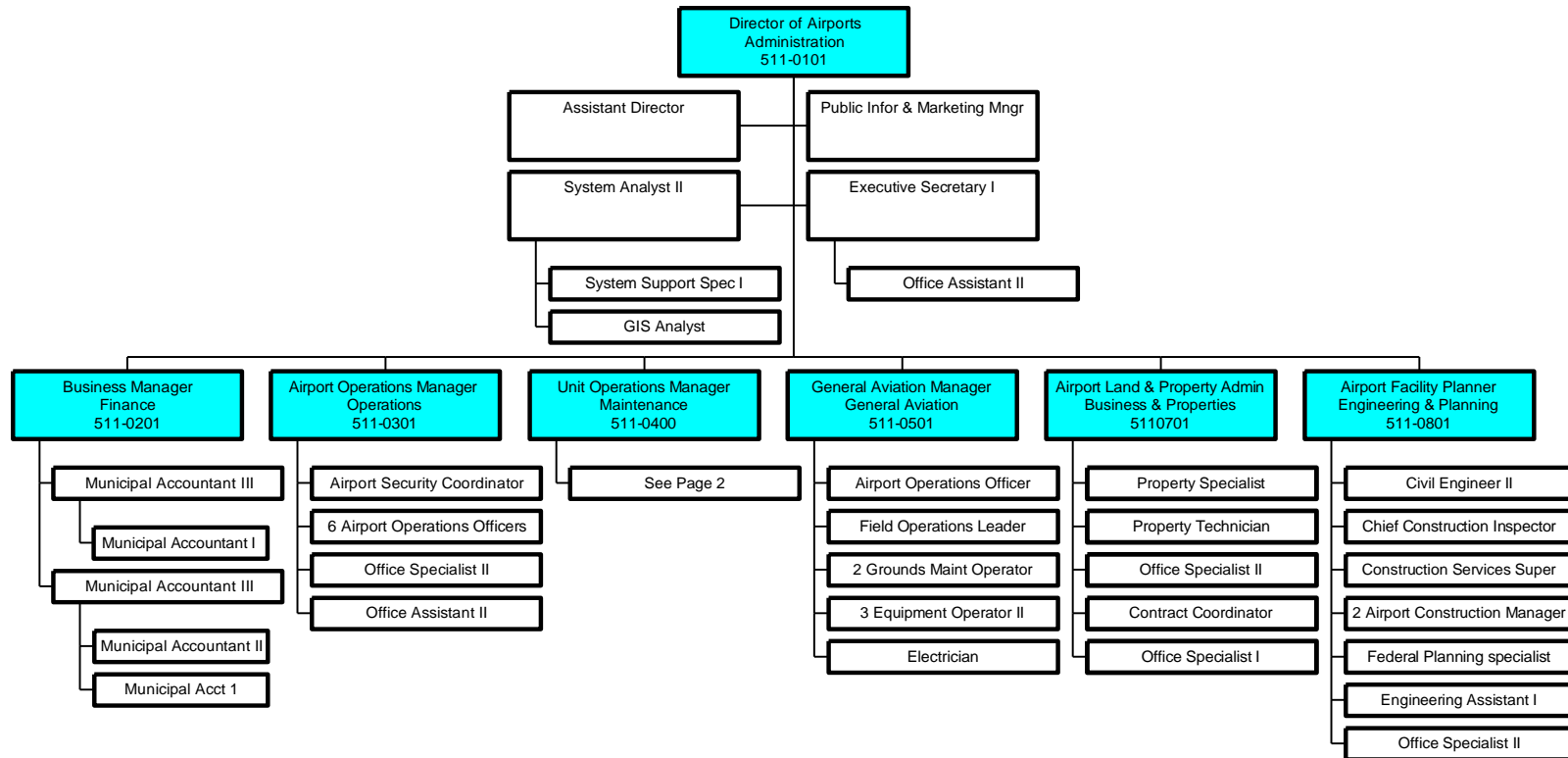
ATTACHMENTS

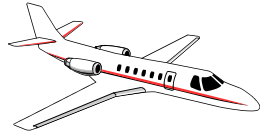
Attachment 1	Organizational Chart
Attachment 2	DBE Directory
Attachment 3	Monitoring and Enforcement Mechanism/Standard Default Clause
Attachment 4	Overall Goal for Concessions other than Car Rental Calculation, Consultation, Breakout of Estimated Race-Neutral & Race-Conscious Participation
Attachment 5	Overall Goals for Car Rentals Calculation, Consultation, Breakout of Estimated Race-Neutral & Race-Conscious Participation
Attachment 6	Form 1 & 2 for Demonstration of Good Faith Efforts
Attachment 7	Regulations: 49 CFR Part 23



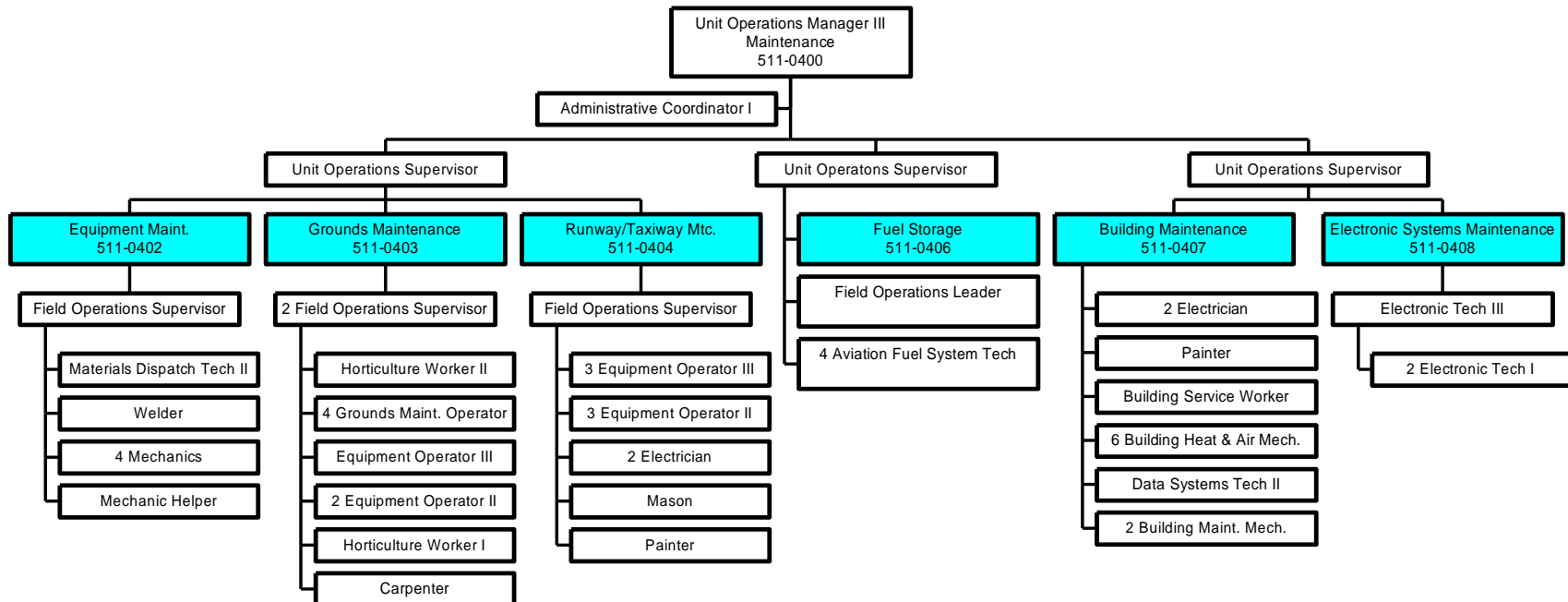
Attachment 1

City of Oklahoma City Department of Airports Organizational Chart FY 2009-10





City of Oklahoma City
Department of Airports
Organizational Chart
FY 2009-10



Attachment 2

DBE Directory as printed from State DOT website.

July 15, 2009
Bid Opening of
August, 2009

OKLAHOMA DEPARTMENT OF TRANSPORTATION DISADVANTAGED BUSINESS ENTERPRISES

* SUBCONTRACTOR, SERVICES SUPPLIERS, MFG./ FABRICATOR NORMALLY RECEIVING 100% FOR DBE GOAL.

** MATERIAL SUPPLIER NORMALLY RECEIVING 60% FOR DBE GOAL

*** BROKER NORMALLY RECEIVING 0% FOR DBE GOAL

LEGEND

BM - Black Male

HM - Hispanic Male

NM - Native Male

APM - Asian Pacific Male

AIM - Asian Indian Male

BF - Black Female

HF - Hispanic Female

NF - Native Female

APF - Asian Pacific Female

AIF - Asian Indian Female

WF- White Female

COMPANY/INDIVIDUAL

PHONE/FAX

ADDRESS

01/12 Abilez Construction Company Ruben Abilez, President Excavation, Clearing and Grubbing, Removals, Utility and Drainage Structures	HM * Fax Mobile Email	405-964-5721 405-964-6007 405-306-3802 abilezconstruction@yahoo.com	Post Office Box 984 McLoud, Oklahoma 74851
10/11 Adkins Trucking & Excavating, Inc. Brett Adkins, President Grade and Drain, Silt Fence and Silt Dike, Bases and Subbases, Riprap, Gabions Removal of Structures and Obstructions (Demolition), Trucking	NM * Fax Mobile Email	405-366-8559 405-366-8556 405-317-0663 adkinstrucking@hotmail.com	1238 North Adkins Hill Road Norman, Oklahoma 73072
6/09 ADVANCED WORKZONE SERVICES, LLC Alma Pickle Traffic Control	NF * Fax Mobile Email	918-682-9393 918-682-9394 918-351-4140 ampickle@aw-inc.com	PO Box 3875 Muskogee OK 74402
8/10 AIRPORT LIGHTING SYSTEMS, INC. Courtney Denney Supplier of airport & heliport lighting	WF ** Fax Mobile Email	817-912-0400 817-310-0146 817-313-9648 cd@airportlighting.com	931 S. Church St. Grapevine, TX 76051
03/12 Allicat Construction Michael Ellis Concrete Structures, Clearing and Grubbing, Grade and Drain, Erosion Control, Bridge Removal, Demolition	NM * Mobile Email	405-244-1446 405-320-0047 sea.biscuit.44@hotmail.com	Post Office Box 0031 Chickasha, Oklahoma 73023

5/11	HM		
AMRAIL CONSTRUCTION, INC.	*	918-438-2220	PO Box 581164
Alfonso Medrano, President	Fax	918-438-2260	Tulsa, OK 74158
Inspection & Construction of Railroad	Mobile	918-758-6511	
Track, Maintenance & Repair,	Email	amrailam@hotmail.com	
Response to Emergency Calls	Web	amrailconstruction.com	
04/12	WF		
Annie's Excavating, Inc.	*	785-455-2214	30 Fox Road
Luanne Willbrant, President	Fax	785-455-3507	Clifton, Kansas 66937
Clearing and Grubbing, Demolition of	Mobile	785-275-1157	
Structures, Earthwork, Rip Rap, Trucking	Email	bulldog5302@yahoo.com	
1/11	BM		
ATCHISON CONSTRUCTION II	*	918-618-6812	PO Box 371
David Atchison II, Owner			Eufaula OK 74432
Laying Sod, Fencing, Mailboxes,	Email	atchisonconst2@yahoo.com	
Construction Staking, Minor Clearing,			
And Cable Barrier			
03/12	BF		
B & J Concrete, Inc.	*	405-532-3390	Post Office Box 1921
Melba Jo Walker, President	Fax	405-424-9636	Oklahoma City, Oklahoma 73101
Machine Grading, Base and Subbase,	Mobile	405-532-3399	
Minor Concrete Paving, Concrete Joint	Email	mjowalker@yahoo.com	
Rehabilitation, Minor Concrete Structures,			
Incidental Construction, Guardrail,			
Fencing			
07/12	NM		
BARTON CONST. CO., INC.	*	918-835-8491	2702 N. Sheridan, Bldg. E
Gene Barton, Owner	Fax	918-835-8493	Tulsa, OK. 74115-2321
Commercial and Industrial Bldg. Const.,	Mobile	918-527-7252	
Remodeling, Misc. General bldg. Const.	Email	bci100@tulsacoxmail.com	
10/09	NM		
BENNETT SURVEYING, INC.	*	918-476-7484	PO Box 848
Wade & Wesley Bennett, Owners		918-476-7243	Chouteau OK 74337
Land Surveying, Construction &	Fax	918-476-7485	
Right-of-Way Staking	Email	joellen@bennettsurveying.com	
	Web	bennettsurveying.com	
8/09	NM		
BILL'S CONSTRUCTION	*	918-464-2397	Route 1, Box 1190
Bill Shanks, Owner	Mobile	918-441-5875	Webbers Falls, OK 74470
Guardrail, fencing, Bridge Walls &			
Concrete Finishing, Laying Sod,			
Sign Installation			
8/11	NM		
BIRDSONG FARMS, L.L.C.	*	580-220-7995	3190 Grassland Road
Anthony Garrett, Owner	***	580-220-7994	Ardmore, Oklahoma 73401
Clearing & Grubbing, Excavation &	Fax	866-674-9760	
Embankment, Mowing, Removal of	Email	texran0124@yahoo.com	
Structures & Obstructions, Pipe Railing,			
Guardrail, Fencing, Distributor of Cold			
Patching Material			

10/09 Bomax Industries, Inc. dba WOODWARD/LAVERNE CONC. Maxine Schmitz, President Hauling Material, Conc. Mfg.	WF * 580-256-4555 P.O. Box 1828 Mobile 580-334-6134 Woodward, OK 73802 Fax 580-256-4560 Email: wwconcrete@pldi.net
5/11 BOWTIE LAWN & TREE CARE LLC Clyde E. Neal, Jr. Landscaping	BM * 405-406-9660 11012 N. May Ave., Apt. 131 Fax 405-755-5538 Oklahoma City, OK 73120 Email: organic_man2@hotmail.com
2/10 BREDA CO., INC. Roberto Breda, Owner Rebar installation	HM * 713-937-9270 6830 N. Eldridge Pkwy. Ste. 505 Fax 713-937-6732 Houston, TX 77041 Email breda@pdq.net
03/12 C & L CONSTRUCTION, INC. dba C.L.C.I. Nathan Currey, President Concrete Incidentals, Utility Construction, Welding, ROW Clearing, Pipeline, Mechanical Construction & Mowing	NM * 918-376-2324 P.O. Box 154 Fax 918-376-2291 Collinsville, OK. 74021 Email jerriann@clcinet.com
2/11 CV3 MECHANICAL SOLUTIONS, LLC Frank C.V. Bates III, Owner HVAC – Service, Repair, Installation, and Consulting	BM * 918-261-6710 507 S. Main St., Suite 214 Fax 918-794-0069 Tulsa OK 74103 Email frankbates1@cox.net
8/10 CADIT COMPANY, INC. Kathryn Carlisle, President Broker: Commission & Fees only for miscellaneous & struc. steel	WF *** 817-430-4409 P. O. Box 784 Fax 817-430-0409 Roanoke, TX 76262 Mobile 682-465-1212 Email Kcarlisle@caditcompany.com Web www.caditcompany.com
12/11 Columbia Curb & Gutter Company Billy V. Boyce, Jr., President Heavy Highway Construction, Pavement Miling and Recycling, Grade and Drain, Bases, Surfaces, Structures, Incidental Construction	NM * 573-474-6186 4105 I-70 Drive SE Fax 573-474-2831 Columbia, Missouri 65201 Email ccg@ccgmissouri.com Web www.ccgmissouri.com
07/12 CONGER ENTERPRISES, LLC Lora Conger, President Erosion Control	NF * 918-455-0474 13300 E. 130 th Street Fax 918-455-0475 Broken Arrow, OK 74011 Mobile 918-261-6365 Email lconger07@windstream.net
2/11 CROSS-BO CONSTRUCTION Justin Bohannon Grade & Drain, Silt Fence/Dike, Incidental Const., Utility Const., Water Line Const. & Trucking	NM * 918-342-6955 601 W. Lowry Fax 918-342-8133 Claremore, OK 74017 Mobile 918-760-3722

05/12 D & P TANK SERVICE, INC. George Pease III, President Grade and Drain, Base Incidental Const., Concrete Repair, Watering, Hazmat, And Demolition	NM * 580-762-4526 Fax 580-765-7323 Mobile 918-640-1701 Email georgepease@dptank.com Web www.dptank.com	PO Box 987 Ponca City, OK 74602
3/11 DESERT STEEL CO., INC. JoAnn Nichols, President Place & Tie Reinforcing Steel	WF * 972-790-7975 Fax 972-790-8563 Mobile 817-688-0383 Email joannichols@earthlink.net Email desertsteel@yahoo.com	3613 Kim Drive Irving, TX 75061
Denson's Heating & A/C, Inc. Ronnie Denson, President Utility Construction, Welding and Bridge Repair	BM * 918-687-5197 Fax 918-681-1315 Mobile 918-351-0203 Email densonhvac@sbcglobal.net	2030 Reeves Street Muskogee, Oklahoma 74401
06/12 DIAMONDBACK STEEL CO., INC Keith Wright, President Fabricator of reinforcing steel, misc steel fabrication, rebar installation ** Supplier of Pilings**	NM * 918-686-6340 Fax 918-686-6341 Mobile 918-781-2262 Email rosalie_dbs@sbcglobal.net	419 South Cherokee Muskogee, OK. 74403
7/11 DIRECT TRAFFIC CONTROL, INC. Kim Murphy, President Traffic control, permanent sign fabrication	WF * 918-682-1900 Fax 918-682-9993 Mobile 918-685-4676 Email dtci@directtrafficcontrol.com	P.O. BOX 602 Muskogee, OK 74402-0602
10/09 DOUBLE D CONSTRUCTION Diana Tixier, Owner Traffic Control, Permanent Signing, Fencing, Guardrail, Erosion Control	WF * 719-336-7264 Fax 719-336-7212 Email Diana.tixier@Lcomminc.com	7009 County Road S. Lamar CO 81052
7/09 EL RENO SOD FARM, INC. Angela Heinrich, President Erosion Control & Landscaping, Fencing	WF * 405-262-0622 Fax 405-422-0623 Mobile 405-640-4861 Email angela@elrenosodfarm.com	P.O. Box 1132 El Reno, OK 73036
03/12 ERNIE DICK COMPANY Bettye Jo Dick, President Material Supplier; Castings, Curb Inlets, Edgedrain	WF ** 405-843-1691 Fax 405-848-3997 Mobile 405-640-8845 Mobile 405-641-0866	1920 NW 56 th Terrace Oklahoma City, OK 73118
4/12 Faith Five Star Construction, Inc. Doyle Anderson, Owner Erosion Control, Excavation, Fencing, Demolition	BM * 405-282-4747 Fax 405-282-4848 Mobile 405-990-6426	P.O. Box 1248 Guthrie, OK 73044

1/11 FAST FORMLINERS, INC. Kevin Pangilinan, President Manufacture Concrete Formliners	APM * 636-271-6291 Fax 636-271-6297 Email kevinpangilinan@sbcglobal.net Web www.fastformliners.com	115 W. Flier, Suite 109 Pacific MO, 63069
10/11 FOURKILLER CONST., INC. H. Brandon Fourkiller, President Minor structures & misc. concrete, earthwork base & subbase & erosion control, grade & drain, incidental Concrete paving, fencing, mailboxes & supports, sawcutting, temp detour roads/bridges, under drain systems.	NM * 918-696-5340 Fax 918-696-7766 Mobile 918-905-0361 Mobile 918-905-0360 Email fourkillerconstruction@yahoo.com	Route 3, Box 1795 Stilwell, OK 74960
8/09 FRIX CONSTRUCTION CO., INC. Kem Frix, Pres. Earthwork, Heavy Highway Const.	NM * 918-682-7326 Fax 918-687-0081 Mobile 918-869-9515 Email frixconstruction@gmail.com	P.O. Box 2385 Muskogee, OK 74402-2385
04/12 FRIX & FOSTER CONSTR., CO., INC. Priscilla Frix, Owner Heavy Highway Const., Earthwork	WF * 918-687-7411 Fax 918-687-0081 Mobile 918-869-2117 Email frixconstruction@gmail.com	P.O. Box 1039 Muskogee, OK 74402
1/11 FULSOM BROTHERS, INC. Paul Jay Fulsom, President Signing, Lighting, Guardrail	NM * 620-758-2828 Fax 620-758-2464 Mobile 316-772-2802	PO Box 522 Cedar Vale, KS 67024
03/12 GARY A. CRAIN, INC. Kimberly L. Hyden, President Paint & Penetrating Water Repellant, Grind & Groove Concrete Bridge Decks & Asphalt Roadway, Profilograph, Deck Seal, Anti-Graffiti Coating	NF * 405-567-4058 Mobile 405-990-2642 Fax 405-567-4684 Email khyden@windstream.net	10364 South Highway 99 Prague, OK 74864
03/12 HDB CONSTRUCTION, INC. Alonzo Harrison Earthwork, Hauling, Landscaping, Minor structures, Misc. Concrete, Fencing & Guardrail.	BM * 785-232-5444 Fax 785-232-5445 Email info@hdbconstruction.com Web www.HDBConstruction.com	729 S.E. Wear Avenue Topeka, KS 66607
7/11 HUB CONST. CO., INC. Hubert Barker, President Conc.Pav, Structures, Earthwork, Guardrail, Fence, Base & Subbase	NM * 580-566-2271 Fax 580-566-9929 Mobile 580-513-5951	Rt. 1, Box 350 Boswell, OK 74727-9709
6/09 HUDSON, INC. Patty Hudson, Owner Cold Milling, Conc. & Asph. Removal, Diamond Grinding, Grooving, Profilograph, Hauling	WF * 405-348-9335 Fax 405-359-1615 Mobile 405-590-8639 Email HudsonInc@aol.com	PO Box 30272 Edmond, OK 73003-0005

5/11
HYDRO-TURF, INC.
Camille Fitzgerald, President
Erosion Control: Seeding, Sprigging
Fertilizing, Hydro Mulch, Straw Mulch

WF
* 918-252-7066 1205 S. Sycamore Court
Fax 918-252-7066 Broken Arrow, OK 74012
Email hydroturf@aol.com

06/12
Interstate Sealant and Concrete, Inc.
Cheryl Sment, President
Joint and Crack Sealing, Saw Cutting,
Spall Repair, Concrete Repair, Epoxy
Injections on Bridges and Structures

WF
* 262-547-6316 108 Wilmont Drive
or 414-688-3115 Waukesha, WI 53189
Fax 262-547-6844
Email csment@interstatesealant.com
Web www.interstatesealant.com

8/09
ISAAC'S SURVEYING SERVICE
Kenny A. Isaacs, Owner
Land Surveying, Design Surveying
Construction Staking, Right of Way
Staking, Writing Legal Descriptions

NM
* 918-245-0456 5 W. 42nd Street
Fax 918-245-8723 Sand Springs, OK 74063
Mobile 918-638-3204
Email oksurveyor@aol.com

9/09
J & S EXCHANGE, INC.
Joe & Sandra Nemecek, Owners
Supplier of Road Stabilization Materials,
Trucking, Soil Stabilization, Final Grade,
Ditch liner, Aggbase, Dirt work

NM
* 580-332-9100 Post Office Box 1323
** Ada, Oklahoma 74821-1323
Fax 580-310-0264
Mobile 580-421-6921
Email sandy@sblada.com

5/11
JENKINS LANDSCAPING & FENCING CO.
Zenus Jenkins
Landscaping & Fencing, Conc. Incidentals

BM
* 405-426-9408 708 NE 81st Street
Oklahoma City, OK 73114

02/12
LMC Corp.
Jerry R. Lee, Owner
Commercial Construction, Industrial
Concrete Paving, Foundation Construction
And Demolition

NM
* 918-622-2902 4466 S. 74th E. Ave., Annex A
Fax 918-622-2903 Tulsa, OK 74145
Mobile 918-850-7710
Email lmckla@hotmail.com

5/11
L & L WORLDWIDE INC.
Lula Stock, President
Supplier of Construction Materials
(Building Supplies)

WF
** 561-656-2402 6310 Pompano Street
561-630-9201 Jupiter, FL 33458
Fax 561-656-2483
Email lwwexp@bellsouth.net

06/12
L & F Construction, LLC
Rusty Frazier, Owner
Grade and Drain, Incidental Construction,
Utility Construction (Water, Sewer, Gas,
Storm Drains)

NM
* 918-791-9155 Post Office Box 451959
Fax 918-791-9156 Grove, Oklahoma 74345
Mobile 918-812-5355

5/10
LIBERTY PRECAST, LLC
Brad Davis, President
Precast Concrete Products

NM
* 918-298-9080 P.O. Box 156
Fax 918-298-7274 Jenks, OK 74037-0156
Email sdavis@libertyprecast.com

04/12 MAC CONSTRUCTION, INC. Jesus Robledo, President Clearing & Grubbing, Utility Construction, Boring, Concrete Culverts, Conc. Repair, Incidental Concrete Construction, Minor Asphalt Paving and Trucking	HM * Fax Mobile Email	918-536-6310 918-536-6311 918-706-9407 JesRoble9@aol.com	32662 N. 3970 Road Ramona, OK 74061
7/11 MACK'S S & S CONST. CO. Carlos B. Vaglienty, President Joint sawing & sealing, Minor Concrete Construction, Minor Removals	HM * Fax Mobile Email	405-670-1900 405-670-1903 405-200-3524 macksmoney@sbcglobal.net	Post Office Box 15474 Oklahoma City, OK 73155
07/12 MARSHALL CONST. INC. Janet Marshall, President Major Structures, Minor Structures & Misc. Concrete	WF * Fax Mobile Email	479-369-2268 479-369-2268 479-650-1346 JLMarsh862@Aol.Com	10245 Locust Mountain Road Mountainburg, AR 72946
9/09 MCKITTRICK PRECAST INC. Carl McKittrick, President Manufacturer of Precast Concrete Burial Vaults, Aerobic Sewer Systems, Septic Tanks, Grease Traps, Picnic Tables, Storm Shelters, and Parking Blocks	BM * Fax Mobile Email	918-486-6227 918-486-5912 918-261-2120 mpi@valornet.com	PO Box 548 Coweta OK 74429
5/11 MECHANICAL AIR SYSTEMS, INC. Karyn Britton, President Commercial & Industrial HVAC (Including Boilers, Chillers, Hydranic Piping, Rooftop Units, Air Handlers, Exhaust Fans, Ductwork, Grilles, and Registers) Installation and Repair for New Construction or Remodel	WF * Fax Email Web	918-251-4123 918-251-4130 brittonkn@masi-ba.com www.masi-ba.com	1705 W. Detroit Street Broken Arrow, OK 74012
8/09 MID-PLAINS CONSTRUCTION, INC. Layne Morgan, President General Building Const., Grade & Drain, Erosion Control, Base & Subbase, Minor Concrete Paving, Structures, Incidental Construction Permanent, Sign Installation	NM * Fax Email	580-924-0288 580-924-0289 layne.m@mid-plainsconstruction.com	PO Box 237 Mead, OK 73449
9/09 MIDWEST BUILDING SUPPLIES INC Elmer Dixon, President Finish Carpentry Contractor, Broker: Building Construction Materials	BM * *** Fax Mobile	313-592-4989 313-535-6534 313-587-2172	15319 Dale Street, Suite B Detroit MI 48223
09/11 MSC GUARDRAIL, INC. Marta Covington, President Guardrail	WF * Fax	580-326-4944 580-326-4924	Post Office Box 357 Hugo, Oklahoma 74743
12/11 MUNOZ CONST., INC. Antonio Munoz, President Major structures	HM * Fax Mobile	405-634-9462 405-616-3132 405-570-6451	1129 SW 27 TH Okla. City, OK 73109

03/12 Nichols Erosion Control Dustin Nichols, Owner Erosion Control	NM * 580-244-3531 Fax 580-244-3530 Mobile 405-818-6531 Email dusty@nicholserosion.com Web www.nicholserosion.com	29192 Highway 144 Smithville, Oklahoma 74957
11/09 ODUM SERVICES, L.P. Gregory E. Odum, Owner Guardrail, fencing, minor structure, painting, rest areas, mowing, small roadside signs	BM * 903-938-8059 Fax 903-938-8830 Mobile 903-926-0404 Email: odum@charterinternet.net	6555 Harris Lake Rd. Marshall, TX 75672
12/09 OK CONSTRUCTION, INC. Ezra Brown, President Masonry Construction	BM * 405-842-3561 Fax 405-848-4132 Mobile 405-760-8191 Email ez391@netzero.com	900 NE 69th St. Oklahoma City, OK 73105
01/10 OKLAHOMA EROSION CONTROL, INC. Raygn Alexander, President Erosion Control, Concrete Joint Rehab., Concrete Structures, Timber structures, Incidental Construction Removal of Structures/ Obstructions, Guardrail, Fencing, Monuments, Concrete Median Barrier	NM * 918-455-3859 Fax 918-455-3860 Mobile 405-334-8905 Email raygnalexander@hotmail.com	1011 N. Main Stillwater, OK 74075
2/10 OKLAHOMA GUARDRAIL, LLC Mark Jones, Owner Guardrail, Minor Structures, Misc. Concrete, Incidental Const., Pier Drilling	NM * 405-743-3113 Fax 405-372-2962 Other# 918-289-1995 Email pmjones@provalue.net	2216 S. Fairgrounds Rd. Stillwater OK 74074
1/11 ONEWAY CONSTRUCTION INC. Margarat Farmer, Owner General Highway Construction, Concrete & Asphalt paving, demolition, dirt work, underground drainage & utility const.	BF * 405-427-6377 Fax 405-427-1777 Email onewayconst@sbcglobal.net	P.O. BOX 10857 Midwest City, OK 73140
12/10 OPES, INC. Tomas Diaz, President Environmental Consulting, Fuel Tanks (AST/UST) Removal/Installation /Upgrade/General Maintenance, Remediation Services, Soil & Groundwater Sampling/ Monitoring Well Installation/Subsurface Investigation/Remediation, Professional Engineer Services, SPCC, SWP3, Lead Based Paint Abatement Residential/Commercial Buildings, Fencing, Demolition, Incidental Concrete Construction.	HM * 405-360-2911 Fax 405-360-2914 Mobile 405-659-5423 Email tadopes@sbcglobal.net	330 W. Gray St., Suite 170 Norman, OK 73069

11/09	BM		
ORANGE & SON'S TRUCKING	**	405-769-4052	5329 Oakwood
Joe Orange Sr., Owner		405-343-5678	Spencer OK 73084
Trucking, Asphalt Repair, Dirt work			
06/12	NM		
Outlaw Construction	*	918-686-0639	4611 South 30 th East
Harold Gatzman, Owner	Fax	918-687-0584	Muskogee, Oklahoma 74403
Grade and Drain, Erosion Control, Bases,	Mobile	918-616-9251	
Incidental Construction, Removal of	Email	outlawconstruction@suddenlink.net	
Structures and Obstructions, Utility			
Construction (Water, Sewer, Storm			
Drain), Minor Concrete Structures			
1/10	WF		
P. K. CONSTRUCTION	*	580-357-4979	1904 SE 195 th Street
Phyllis Banks, Owner	**		Lawton, OK 73501
Erosion control, fencing, supplier of sod.	Fax	580-355-5025	
Stampcrete (decorative concrete)	Mobile	580-512-3703	
3/11	HM		
PEREZ CONSTRUCTION, INC.	*	405-606-8612	4609 South Rockwell Avenue, Suites D & E
Henry Perez, Pres./CEO			Oklahoma City, Oklahoma 73179
Excavation, Dirtwork, Concrete Const.,	Mobile (Henry)	940-781-4410	
Removal of Structures and Obstructions,	Mobile (Andrea)	580-333-0607	
Pipe Railing, Guardrail, Tie Reinforcing	Email	andrea.pci@cebridge.net	
Steel, Rip Rap (Rubble and Concrete),			
Storm Sewer Pipe, Inlets, Junction Boxes,			
Culverts, Headwalls, and Extensions on			
All Box Culverts			
9/11	BM		
Phil Givens Company	*	918-456-9329	19918 East 766 Road
Phil Givens, Owner	Mobile	918-237-2810	Tahlequah, Oklahoma 74464
Consulting, Dirtwork, Site Excavation,			
Mowing, Sod Installation, Mulching,			
Guardrail, Mediation, Civil Rights Training			
6/11	BM		
PINPOINT INDUSTRIES	*	918-504-4118	13029 East 36 th Street
Ulysses Washington, Owner		918-504-4262	Tulsa, Oklahoma 74134
Property Preservation, General Carpentry,	Fax	918-687-1859	
Onsite Property Inspection Services,	Email	pinpointindustries@gmail.com	
Onsite Merchant Inspections, Rehab Properties,			
Real Estate Maintenance, Removal of Debris			
(Residential and Commercial), Total Cleanup			
And Preparation of Properties for Resale,			
Lawn and Tree Maintenance			
04/12	HM		
PROFESSIONAL REBAR INSTALLERS, INC	*	405-310-6053	1108 W. Main, PMB 183
Danny Herrera, President	Fax	405-573-4683	Norman, OK 73069
Reinforcing Steel Placement (Labor Only)	Mobile	405-971-4951	
	Email	dannyh-pri@yahoo.com	
9/11	HM		
R.F.B. CONSTRUCTION CO., INC.	*	620-232-2900	565 E. 520 th Ave.
Richard F. Beachner, President	Fax	620-232-2998	Pittsburg, KS 66762
Fencing, Guardrail, Erosion Control,	Mobile	620-724-3411	
Minor structures & Misc. Concrete	Email	dbrfb@ckt.net	

9/10	WF		
REECE CONSTRUCTION CO., INC.	*	785-335-2269 KS	PO Box 168
Mary Lou Reece, President	Fax	785-827-8044 KS	Scandia KS 66966
Concrete Structures and Incidental Const.	Phone	972-347-2702 TX	
	Fax	972-346-2703 TX	
	Mobile	Kansas - 785-819-3778	
		Texas - 214-215-4766	
	Email	mlreece@reececonstruction.com	
03/12	WF		
ROADWAY SERVICES, INC.	*	580-225-3707	P.O. Box 1915
Cassandra L Horton, President	Fax	580-225-3711	Elk City, OK 73648
Erosion Control, ditchliners, earthwork, base & sub-base, minor struct., hauling,	Mobile	580-821-2454	
	Email	rw.services@yahoo.com	
5/10	NM		
ROADWAY TECHNOLOGIES, LLC.	*	405-567-3706	352707 E. Hwy 62
Gary A. Crain, Owner	Fax	405-567-3506	Prague, OK 74864
Penetrating Water Repellant.	Mobile	405-620-3794	
Concrete Sealers & Shot Blasting	Email	roadway@ecewb.com	
10/09	NF		
RUNNING HORSE CONST., INC.	*	918-263-2020	P.O. Box 1066
Rebecca Raspberry, President	Fax	918-263-3030	Skiatook, OK 74070
Minor excavation, concrete demolition, Trucking & Utility Construction	Mobile	918-284-4976	
	Mobile	918-284-4978	
	Email	razzgrl2000@yahoo.com	
4/11	HM		
SAC SERVICES, INC.	*	405-682-4948	3600 S. Ross Avenue
Arturo Martinez, President	Fax	405-686-0882	Oklahoma City, OK 73119
Grade & Drain, Erosion Control, Bases, Surfaces, Structures, Incidental Construction	Mobile	405-834-9092	
06/12	WF		
SIMPLEX SUPPLIES, INC. dba	**	763-398-0040	9020 W. 35W Service Drive
SIMPLEX CONSTRUCTION SUPPLIES, INC.	Fax	763-398-0039	Blaine, MN 55449
Sarah Bazey	Mobile	612-240-6554	
Construction Material Supplier	Email	simplexcon@aol.com	
12/08	NM		
SIOUX CONSTR. CO., INC.	*	580-772-0230	P.O. BOX 1936
Albert Cranford	Fax	580-772-5856	Weatherford, Oklahoma 73096
Erosion Control & Fencing	Mobile	580-819-2472 (Allison Biscoe)	
12/11	NM		
Sober Brothers, Inc.	*	580-765-5503	3508 Lake Road
Tom Sober, President	Fax	580-767-8829	Ponca City, Oklahoma 74604
Sand Production, Excavation, Hauling, Utility Construction, Concrete Paving And Incidentals	Mobile	580-761-4824	
	Email	scott.sober@soberbrothers.net tom.sober@soberbrothers.net	
11/09	WF		
SOUTHWEST TURF & LANDSCAPE, INC.	*	918-366-3131	P.O. Box 1031
Vicki Easton, President	Fax	918-366-3131	Bixby, OK 74008
Erosion Control & Landscaping	Mobile	918-557-7498	

4/09	NM		
R.D. Sumner, Inc.	*		4161 N. Gregory Road
Rick Sumner, President	Fax	405-354-2850	El Reno, OK 73036
Building Construction, Fencing, Guardrail, Minor Concrete Construction	Mobile	405-833-8837	
1/10	NM		
SUPERIOR INSULATION, INC.	*	734-728-8300	34857 Brush Street
dba Superior Building Insulation	Fax	734-728-0490	Wayne MI 48184
Jed Corp, President	Mobile	734-320-2313	
Building Insulation Contractor	Email	superiorone@wwway.com	
6/09	NM		
TANNER CONSULTING, LLC.	*	918-745-9929	5323 S. Lewis Ave.
Dan Tanner	Fax	918-745-9969	Tulsa, OK. 74105
Civil Engineering, Const. Staking, Land Surveying, Land Planning, Architecture, Landscape Architecture	Email	im@tannerbaitshop.com	
3/11	BF		
TECHNICAL INNOVATIVE CONCEPTS, INC.	*	405-604-5142	5350 S. Western Suite 400
dba TIC	Fax	405-604-5143	Oklahoma City, OK 73109
Jan Jenkins	Mobile	405-503-7428	
Security Consulting and Construction, Fencing, and Guardrail	Email	TIC2000@sbcglobal.net	
	Web	www.ticok.com	
8/10	BM		
TERRAZZO, USA, LLC	*	405-275-7591	2704 Northridge Road
Dwayne Hill, Owner	Fax	405-273-9821	Shawnee, OK 74804
Terrazzo Installation			
6/10	WF		
THOMPSON CONST. STAKING, LLC.	*	580-622-3128	2505 Timanus Dr.
Lisa Thompson, Owner	Fax	580-622-3128	Sulphur, OK 73086
Const. Staking	Mobile	580-618-1560	
	Email	tcs@brightok.net	
11/10	NM		
T. MCDONALD CONSTRUCTION, INC.	*	918-689-7858	PO Box 1043
Tubby McDonald, President	Fax	918-689-3169	Eufaula, OK 74432
Grade & Drain, Erosion Control, Bases and Subbases, Traffic Bound Surface Course Concrete Culverts, Riprap, Fencing, Placing Temporary Concrete Median Barrier, Trucking	Email	mcdonald.jules@gmail.com	
6/10	NM		
TREAS CONSTRUCTION, INC.	*	580-889-1792	Route 5 Box 933
Larry Treas, President	Fax	580-428-3150	Coalgate, OK 74538
Grade & Drain, Concrete Structures, Incidental Concrete Paving, Rip Rap, Gabions, Removal of Structures/Obst.	Mobile	405-823-7173	
	Email	dylan@brightok.net	
11/09	WF		
TRI-CITY SEAL CO., INC.	*	405-381-4051	P.O. Box 775
Ruth Dedmon, President	Fax	405-381-4197	Tuttle, OK 73089
Seal Coating, Concrete Sawing, Joint Sealing, Concrete and Asphalt Repairs, Asphalt Crack Seal, Earthwork	Mobile	405-520-2462	
	Email	tricityseal@pldi.net	

2/12 VALLEY ILLUMINATORS Polly H. Valley, Owner Manufacturer of Airfield reflectors.	WF ** 253-833-3016 P.O. Box 3001 Fax 253-735-5414 Federal Way, WA 98063-3001 Email valley@zipcon.com
4/10 C H SMITH CONST, INC. dba VERDIGRIS VALLEY SOD FARM Teresa Smith Erosion Control Services	WF * 918-341-8742 P O Box 97 Mobile 918-557-0263 Claremore, OK 74017 Fax 918-341-9359 Email vsodfarms@sbcglobal.net Email jennysvvsf@sbcglobal.net (Jenny Smith)
5/10 WHITE HAWK GROUP, INC. Marty Edwards, Owner Joint sawing & sealing, pavement sawing, headwall removal, erosion control, landscaping, underpinning & wall tiebacks, mudjacking, general contracting, security/surveillance systems, environ. remediation/inspection/impact assessments	NM * 405-912-1308 P.O. Box 7819 Fax 405-912-7697 Moore, OK 73153 Mobile 405-370-0260 Email w-hawk@swbell.net
2/11 WHITEHORSE SERVICES, INC. Jason Stratton minor structures, misc. paving, utility const., directional drilling, grade & drain, riprap, fencing, guardrail, perm. erosion control	NM * 580-622-6086 PO Box 1318 Fax 580-622-6067 Sulphur, OK. 73086 Mobile 405-990-9565 (primary contact #) Email strattonenterprises151@yahoo.com
03/12 WILDS GREEN GRASS SOD FARM, Inc. Billie Wilds, President Erosion Control & Supplier of Sod	WF * 405-262-5534 P.O. Box 911 Fax 405-262-2497 El Reno, OK 73036 Mobile 405-826-4916 Email wildssod@aol.com

**OKLAHOMA DEPARTMENT OF TRANSPORTATION
DISADVANTAGED BUSINESS ENTERPRISE
TRUCKING FIRMS & OWNER/OPERATORS**

09/09 A & J Transportation, Inc. June Nemecek, President Trucking	WF * 580-310-1009 623 North Main Street Mobile 580-421-5791 Ada, Oklahoma 74820-9565 Email jenaw@cablone.net
10/11 Adkins Trucking & Excavating, Inc. Brett Adkins, President Grade and Drain, Silt Fence and Silt Dike, Bases and Subbases, Riprap, Gabions Removal of Structures and obstructions (Demolition), Trucking	NM * 405-366-8559 1238 North Adkins Hill Road Fax 405-366-8556 Norman, Oklahoma 73072 Mobile 405-317-0663 Email adkinstrucking@hotmail.com

1/10 ANGEL DELEON'S & SONS, INC. Angel DeLeon, President Trucking	HM * Mobile	405-514-2985 405-487-8387	1931 NW 9 th Street Oklahoma City, OK 73106
04/12 Annie's Excavating, Inc. Luanne Willbrant, President Clearing and Grubbing, Demolition of Structures, Earthwork, Rip Rap, Trucking	* WF	785-455-2214 Fax 785-455-3507 Mobile 785-275-1157 Email bulldog5302@yahoo.com	30 Fox Road Clifton, Kansas 66937
7/11 BEST DUMP TRUCKING, INC. Paula Best, President Trucking, Select Borrow, Unclassified Borrow	NF *	918-434-6070 Fax 918-434-5826 Mobile 918-633-3708	PO Box 1066 Pryor, OK 74362
2/12 SHANE BEST TRUCKING, INC. Shane Best, Owner Trucking	NM *	918-434-6010 Fax 918-434-5826 Mobile 918-605-5338 Email besttruck@sstelco.com	4147 E. 480 Road Pryor, OK 74361
06/12 Bruner Trucking, L.L.C. Nick Bruner, Owner Trucking (Owner/Operator)	BM *	405-279-3410 Fax 405-279-1168 Mobile 405-818-8149 Email nickbrunermeeke@yahoo.com	102996 South 3450 Road Meeker, Oklahoma 74855
10/11 C&C TRANSPORTATION, INC. Linda Cantwell, Owner Trucking firm	WF *	918-473-1843 Fax 918-473-2633 Mobile 918-284-7723 Email cctrans@valornet.com	P.O. Box 92 Chcotah, OK 74426
10/11 CENTER, GUYCE STANLEY dba G.S.C. TRUCKING Guyce Stanley Center, Owner Trucking, Owner/Operator	NM *	918-473-5336 Mobile 918-869-1787 Fax 918-473-7129	RR 1 Box 110 Chcotah, OK 74426
8/10 C & J TRUCKING of HASKELL, INC Chucky L. Bolding Trucking	NM *	918-520-9739 Fax 918-482-3395 Email Jennifer.bolding@hotmail.com	14701 W. 23 rd S. Haskell, OK 74436
3/10 CLT ENTERPRISE Corey Teague, Owner Trucking Firm	BM *	405-424-0914 Mobile 405-642-9090 Email penzojoe@aol.com	2101 NE 26 th Street Okla. City, OK 73111
6/10 COVINGTON TRUCKING CO. Randa Covington, Owner Trucking/Hauling	NF *	580-326-9555 Fax 580-326-6218 Mobile 580-326-1586 Email randacovington@cebridge.net	P.O. Box 788 Hugo, OK 74743
5/11 D & H TRUCKING Deon Higgins, Owner Hauling & Erosion Control	WF *	918-371-3790 Fax 918-371-6050	P.O. Box 608 Owasso, OK 74055

03/12 D.J. TIRE AND DUMP TRUCK SVC. Delbert Johnson, Owner Trucking & Tire Service	BM * Fax Mobile Mobile Email	405-771-5111 405-771-5111 405-615-2080 405-923-0621 delbertdba9890@sbcglobal.net	PO Box 03 Spencer, OK 73084
1/11 DJ TRUCKING Derek Miller, Owner Trucking	BM * Email	405-417-3031 djtrucking@coxinet.net	10609 Basswood Canyon Rd. Oklahoma City, OK 73162
11/09 DALE BROWN, INC. L . Dale Brown, President Trucking	NM * Fax	405-942-4653 405-942-4672	P. O. Box 18724 Oklahoma City, OK 73154
6/11 DEANRICK & COMPANY, INC. Curtis D. Casey, President Trucking	NM * Fax Mobile Email	918-473-1843 918-473-2633 918-843-0636 deanrick@lakewebs.net	P.O. Box 92 Checotah, OK 74426
1/10 DELEON, ANDRINO dba DELEON'S TRUCKING Trucking	HM * Fax Mobile	405-524-4689 405-609-1842	2032 NW 18 th Street Oklahoma City, OK 73106
1/10 FROILAN DELEON TRUCKING, INC. Froilan DeLeon, President Trucking	HM * Fax Mobile	405-948-8732 405-830-4402	8100 SW 89 th Oklahoma City, OK 73169
1/10 Olivia DeLeon & Son, Inc. Olivia DeLeon, President Trucking	HF * Mobile	405-602-6309 405-487-0088	2551 NW 16 th Street Oklahoma City, OK 73107
04/12 Dump Dog, L.P. Dana Graves, CEO Trucking	BM * Fax Mobile	918-933-5611 918-619-6194 918-200-6471	303 East 27 th Ct. North Tulsa, Oklahoma 74106
2/11 E.P. TRUCKING, INC. Diane Perez, Owner Riprap, Demolition, Removals, Minor Excavating, Hauling of Const. Matls, (Asphalt, Sand, Dirt, Gravel)	HF * Fax Mobile Email	405-386-5426 405-386-5426 405-417-3477 eptrkng@aol.com	13600 S. Luther Rd. Newalla, OK 74857
4/10 FARMER'S SUPPLY & TRANSP. CO. Juhretta Roark, President Trucking	WF * Fax Mobile Email	580-497-2750 580-497-3304 580-497-6601 fsandtco@yahoo.com	P.O. Box 443 Cheyenne, OK 73628

04/12 TODD FISHER'S TRUCKING Richard Todd Fisher Trucking, Owner/Operator	NM * Mobile Email	918-598-3451 918-261-5933 fishblue@fairpoint.net	9227 West 650 Road Hulbert, OK. 74441
06/12 Brad Foster Trucking, LLC Brad Foster, Owner Trucking (Owner/Operator)	NM * Fax Mobile Email	918-341-9484 918-341-9484 918-402-4548 teresa.foster@hotmail.com	17451 East 450 Road Claremore, Oklahoma 74017-5352
6/09 HUDSON, INC. Patty Hudson, Owner Cold Milling, Conc. & Asphalt Removal, Diamond Grinding, Grooving, Profilograph, Hauling	WF * Mobile Fax Email	405-348-9335 405-590-8639 405-359-1615 HudsonInc@aol.com	PO Box 30272 Edmond, OK 73003-0005
9/09 J & S EXCHANGE, INC. Joe & Sandra Nemecek, Owners Supplier of Road Stabilization Materials, Trucking, Soil Stabilization, Final Grade, Ditch liner, Aggbase, Dirt work	NM * ** Fax Mobile Email	580-310-1009 580-310-0264 580-421-6921 sandyn@cablone.net	625 N. Main Street Ada, OK 74820
12/08 WILL JAMES DUMP TRUCK, INC. Will James Trucking, Owner/Operator	NM * Mobile	918-367-5616 918-645-7370	25625 South Highway 48 Bristow OK 74010
3/10 JOHNSON, LARRY dba L & D Trucking Trucking, Owner/Operator	NM * Mobile	580-265-4514 580-436-9815	18207 CR 3670 Stonewall, OK 74871
2/12 KBK Trucking, Inc. Quinton Palomino Trucking Trucking	HM * Mobile	580-227-3882 580-603-0891	Rt. 2, Box 48 Fairview, OK 73737
1/10 K&K Circle "S" Trucking, Inc. Keith Strickland Trucking	NM * Fax Mobile Email	405-374-9989 405-374-9983 405-990-2322 circletrucks@sbcglobal.net	PO Box 875 Maud, OK 74854
11/09 L & D TRUCKING, INC. dba Lee's Trucking Debbie Sanchez-Reyes, Sec./Tres. Trucking	HF * Fax	620-275-5499 620-271-0242	913 N. 9 th Street Garden City KS 67846
1/10 LEDBETTER, DARRYL dba LEDBETTER TRUCKING Trucking, Owner/Operator	NM * Mobile Email	405-598-0621 405-740-6134 Juleewdes@juno.com	14 Hickory Drive Tecumseh, OK 74873
6/11 L. R. TOBY TRUCKING, INC. Virginia Toby, President Trucking/Hauling	WF * Fax	405-681-2678 405-681-8749	5712 S.W. 29th St. Oklahoma City, OK 73179

04/12 MAC Construction, Inc. Jesus Robledo, President Clearing and Grubbing, Utility Construction, Boring, Concrete Culverts, Concrete Repair, Incidental Concrete Construction, Minor Asphalt Paving, Trucking	HM * 918-536-6310 Fax 918-536-6311 Mobile 918-706-9407 Email JesRoble9@aol.com	32662 North 3970 Road Ramona, Oklahoma 74061
07/09 JAMES MAXWELL d/b/a MAX TRUCKING Trucking	BM * 405-427-1987 Mobile 405-234-6207	2525 N.E. 15 th Oklahoma City, Oklahoma 73117
11/11 McRYAN HAULING, INC. Judy Stinnett Trucking	WF * 817-430-3213 Fax 817-636-2209 Mobile 214-957-0816 Email judy@mcryanhauling.com	P.O. Box 1669 Roanoke, TX 76262-1669
12/10 MUSTANG TRUCKING, INC. Tracy Gibson, President Trucking	WF * 918-266-1028 Fax 918-266-0538 Mobile 918-260-5372 Email mustangtrucking@afo.net	2507 S 289 th E. Ave. Broken Arrow, OK 74014
11/09 ORANGE & SON'S TRUCKING Joe Orange Sr., Owner Trucking, Asphalt Repair, Dirt work	BM ** 405-769-4052 405-343-5678	5329 Oakwood Spencer OK 73084
04/12 ORTEGA TRCKING, INC. Jose Ortega Trucking, Owner/Operator	HM * 405-863-4786 Mobile 405-863-4786	2715 S.W. 39 th Okla. City, OK 73119
2/12 PALOMINO TRUCKING, INC. Miguel Palomino, Owner Trucking	HM * 405-632-1081 Fax 405-632-1081 Mobile 405-659-9516	415 S.W. 39 th St. Oklahoma City, OK 73109
02/12 PALOMINO EXPRESS, INC. Trenda Palomino Trucking	NF * 405-619-9704 Fax 405-619-7240 Mobile 405-520-8386 Email Palominoexpress@sbcglobal.net	3933 S. E. 14 th Place Del City, OK. 73115
10/11 E. Phillips Trucking, Inc. Everett Phillips, Owner Owner/Operator	NM * 918-705-1239 Mobile 918-705-1239	Rt. 3, Box 3385 Checotah, OK 74426
02/10 R.C. Trucking, Inc. Ali Tahir, President Trucking	BM * 405-427-2933 Fax 405-427-0691 Mobile 405-641-7356 Email tahir3@tandtrealtyok.com	3400 North Bartel Road Oklahoma City, Oklahoma 73121

10/11 RP Trucking, LLC Gayla Pierce, Manager Trucking	WF * Fax Mobile Email	580-476-2344 580-476-2429 580-606-9317 RPTrucking@sbcglobal.net	Post Office Box 1014 Rush Springs, Oklahoma 73082
7/11 SD&S Trucking, LLC Samuel de la Rosa, Member/Manager Trucking	HM * Fax Mobile Email	316-744-2318 316-744-2333 316-734-0174 Sdtrucking@msn.com	300 West 61 st Street North Park City, Kansas 67204
04/12 SLM TRUCKING Shelly Lynn Monks Trucking, Owner/Operator	WF * Mobile	918-473-2686 918-617-0148	HC 60, Box 589 Checotah, OK 74426
12/09 T & M MATERIAL & . TRUCKING CORP. Mark and Mary Matthews, Owners Trucking	NM * Fax Mobile	918-489-2213 918-489-2586 918-489-2213 918-774-5634	Route 1, Box 288 Gore, OK 74435-9515
4/10 TACKETT TRUCKING LLC Darwin Tackett, Owner Trucking	NM * Fax Mobile Email	918-478-3782 918-478-3782 918-351-5407 dptackett@emptychair.net	1408 W. Deer Run Road Fort Gibson OK 74434
11/10 T. McDONALD CONSTRUCTION, INC.* Tubby McDonald, President Grade & Drain, Erosion Control, Bases and Subbases, Traffic Bound Surface Course Concrete Culverts, Riprap, Fencing, Placing Temporary Concrete Median Barrier, Trucking	NM * Fax Email	918-689-7858 918-689-3169 mcdonald.jules@gmail.com	PO Box 1043 Eufaula, OK 74432
11/11 Trevizo & Son Trucking, Inc. Francisco J. Trevizo, Owner/Operator Trucking	HM * Fax Mobile	405-602-0300 405-602-0300 405-496-8999	529 S.W. 33 rd Oklahoma City, Oklahoma 73109
2/10 TUCKER, CHARLES, dba C & C TRUCKING Trucking	BM * Mobile	405-769-7671	12925 NE 59 th St. Oklahoma City, OK 73084-8605
1/10 WADE DUMP TRUCK SVC, INC. Peggy Wade, President Trucking	NF * Fax Mobile Email	405-374-1954 405-382-7389 405-831-1407 peggywade@olgpropane.com	PO Box 493 Maud, OK 74854

**OKLAHOMA DEPARTMENT OF TRANSPORTATION
DISADVANTAGED BUSINESS ENTERPRISES
PROFESSIONAL SERVICES**

* SUBCONTRACTOR, SERVICES, SUPPLIERS, MFG./ FABRICATOR
NORMALLY RECEIVING 100% FOR DBE GOAL.

** MATERIAL SUPPLIER NORMALLY RECEIVING 60% FOR DBE GOAL

*** BROKER NORMALLY RECEIVING 0% FOR DBE GOAL

<u>COMPANY/INDIVIDUAL</u>	<u>PHONE</u>	<u>ADDRESS</u>
06/12 Able Consulting Jennifer Koscelny, President Environmental Consulting: Prepare And Complete NEPA Studies and Documents, Long Range Planning, INCOG Coordination	WF * 918-272-4282 Fax 918-272-4282 Mobile 918-691-3679 Email jkoscelny@cox.net	9225 North 133 rd East Avenue Owasso, Oklahoma 74055
5/10 ADEOYE ENTREPRENEURIAL ADVANTAGE, INC. Elijah Adeoye Janitorial Services, Window Cleaning, Final Const. Cleaning, Environmental Consulting Services, Mold Testing & Sampling, Solid Waste Collection, Hazardous/Non-Hazardous Waste Collection Management	BM * 405-701-1594 Fax 405-701-1706 Mobile 405-922-7415 Email aea@aeaenvironmental.com Web aeaenvironmental.com	330 West Gray, Suite 100-6 Norman OK 73069
2/12 ARK II, INC. Roya Sharifsoltani, Pres. Environmental Consulting	WF * 405-377-3700 Fax 405-377-3100 Mobile 405-880-3700 Email RSHARF@ARKII.NET	710 N. Washington Stillwater, OK. 74075
11/09 AVIATION ALLIANCE, INC. Shirley Roberts, CEO Engineering, Airport/Aerospace Consulting, Airfield Electrical Design, Navigational Aids	WF * 817-498-0388 Fax 817-281-1867 Mobile 817-307-3890 Email aviaal@cs.com	PO Box 799 Colleyville, TX 76034
10/09 B & L CONSULTING AND DESGIN, LLC Cheryl Buckner, President Right-of-Way Mapping, Title Investigation Services, As-Plan for Utility Coordination	WF * 405-433-2109 Mobile 405-206-4940 Email cdbuckner@prodigy.net	Rt. 1 Box 477 Cashion OK 73016
04/12 Bailey Law, PLC Wayne Bailey, President Legal Services (Attorney)	NM * 918-456-6113 Fax 918-456-5561 Email wayne@oktaxlaw.com	205 West Shawnee Street Tahlequah, Oklahoma 74464

10/09 BENNETT SURVEYING, INC. Wade & Wesley Bennett, Owners Land Surveying, Construction & Right-of-Way Staking	NM * 918-476-7484 918-476-7243 Fax 918-476-7485 Email joellen@bennettsurveying.com Web bennettsurveying.com	PO Box 848 Chouteau OK 74337
1/11 BETTY W. POWELL, INC. Betty W. Powell, CGA, Owner Review/Appraisals subject to Eminent Domain	WF * 918-493-3149 Fax 918-493-3149 Mobile 918-724-2999 Email bwp218@sbcglobal.net	8103 S. Sandusky Ave. Tulsa, OK 74137-1832
09/11 C & C COMMERCIAL CLEANING CO. Corkey Vick, President Janitorial Services, Janitorial Supply, Building Construction Cleaning (inside final clean, outside debris removal), Mowing	BM * Mobile 405-338-4959 Fax 405-377-1771 Email cvick@okcareertech.org	Post Office Box 92 Stillwater, Oklahoma 74076
4/10 CARGO EXPRESS, INC. Gerry Jones, President Property Freight Forwarding	BM * 405-752-2436 Email cargoex@hotmail.com	13317 Plaza Terrace, Suite 239 Oklahoma City, OK 73120
04/12 CGA Engineers, Inc. Dwain Garner, President Engineering and Land Surveying	NM * 918-749-5800 Fax 918-749-5858 Email dwaingarner@tulsacoxmail.com	8179 East 41 st Street Tulsa, Oklahoma 74145
9/11 CIVILTECH ENGINEERING INC. Melvin Spinks, PE Engineering	HM * 281-304-0200 Fax 281-304-0210 Email company@civiltecheng.com	11821 Telge Road Cypress, TX 77429
12/11 CLS & ASSOCIATES Connie Scothorn Landscape Architecture	WF * 405-525-2220 Fax 405-525-2260 Mobile 405-623-4718 Email connies@clsokc.com Web www.clsokc.com or www.landscapesbycls.com	825 N. Broadway, Suite 315 Oklahoma City, OK 73102
2/11 CONNICO INCORPORATED Connie Gowder, Pres. Const. Consulting, Estimating, Scheduling DBE Plans, Project Management, Const. Administration Independent Fee Analysis, Resident Project Representation	WF * 615-758-7474 Fax 615-758-7477 Email cshadowens@connico.com Web www.connico.com	2594 N. Mount Juliet Rd. Mount Juliet, TN 37122
2/10 CONSTRUCTION ADMIN., INC. Rudy Gray, President Construction Management & Inspection	BM * 405-361-3018 Fax 405-732-2229 Email rudyygray@sbcglobal.net	1529 NE 9 th Street Oklahoma City, OK 73117

01/12 Construction Recruiters America, Inc. Diane Dalman, President Employment Agency – Construction and Electrical Staffing	WF *** 520-572-1972 Fax 520-572-4031 Mobile 520-270-9923 Email diane@constructionrecruitersamerica.com Web www.constructionrecruitersamerica.com	7850 North Silverbell Road Suite 114-131 Tucson, Arizona 85743
8/11 VICKIE L. COOK, P.C. Vickie L. Cook, President Attorney At Law	WF * 580-254-3995 Fax 580-254-2229 Mobile 580-254-1602	1403 Main Street Woodward, OK 73801
1/11 COOVER-CLARK & ASSOC. INC. Carol Coover-Clark, President Architectural, Landscape Architecture, Planning, Interior Design	WF * 303-783-0040 Fax 303-783-0060 Email marketing@coover-clark.com	1936 Market Street Denver, Colorado 80202
9/09 DBE PLANS & GOALS PREPARATION SERVICES Anita Dougherty, Owner Prepare DBE Plans & Goals	WF * 817-594-7283 Fax 817-594-7283 Mobile 817-313-9050 Email ahdough@hotmail.com	210 Lake Hollow Drive Weatherford, TX 76087
6/10 DAVIS FREIGHT MANAGEMENT, INC. Wendy Davis-Schlabach, President Transport and Warehouse Broker	WF *** 716-871-1780 Fax 716-871-1802 Email davisftrt@verizon.net	1927 Elmwood Ave. Buffalo NY 14207
9/11 Denson's Heating & A/C, Inc. Ronnie Denson, President Residential and Commercial HVAC and Plumbing	BM * 918-687-5197 Fax 918-681-1315 Mobile 918-351-0203 Email densonhvac@sbcglobal.net	2030 Reeves Street Muskogee, Oklahoma 74401
10/11 DIGITAL MAPPING ASSOCIATES Susan Mobley, Owner Aerial Mapping, Aerial Survey, Photogrammetry	WF * 405-356-4288 Fax 405-356-9663 Mobile 405-203-8259 Email dmaok@swbell.net Web www.digitalmappingassociates.com	333722 East 890 Road Wellston, OK 74881
1/11 DUNBAR TRANSPORTATION CONSULTING Julie KP Dunbar, President Transportation Planning, Alternatives Analysis, Travel Demand Modeling, Project Management, Transit & Rail Corridor Analysis, Urban Planning, Consulting	WF * 309-661-1767 Fax 309-661-1767 Mobile 309-287-7856 Email julie@dunbartransportation.com Web www.dunbartransportation.com	27 Brunton Court Bloomington, IL 61704
03/12 D.W. GATES ENGINEERING SERV. Derek Gates, Owner Engineering & Utility Relocation	BM * 918-583-6905 Fax 918-583-4226 Mobile 918-605-9515 Email: dwgates@sbcglobal.net	616 S. Main, Suite 112 Tulsa, OK 74119

01/12 Dwyer Construction & Acoustic Services Julie Dwyer, President Noise Abatement Consulting, Project Management and Installation of Acoustic Windows and Doors, Broker of Acoustic Products (fee only)	WF * Other Fax Email	513-661-6335 513-616-3232 513-662-0832 jdwyer.dcas@fuse.net	4047 Boomer Road Cincinnati, Ohio 45247
5/09 ECOLOGICAL SPECIALISTS, INC. Heidi L. Dunn, President Environmental Consulting	WF * Fax Mobile Email Web	636-281-1982 636-281-0973 314-420-6931 Hdunn@ecologicalspecialists.com www.ecologicalspecialists.com	1417 Hoff Industrial Drive O'Fallon, MO. 63366-1959
5/10 GLOBAL CONVEYOR INSTALLATION, INC. Margarita Samuel, President Baggage Conveyor Installation	BF * Fax Email	571-235-2594 239-362-1533 b.henry26@yahoo.com	8650 Wesleyan Drive, Apt. 5-11 Fort Myers, FL 33919
4/11 GUY ENGINEERING SERV., INC. Julie S. Guy, P.E., President Civil Engr., Hydrology, Hydraulics, Site Design, Roadway Design, Water Distribution Systems Design, Sanitary Sewer Design, County Bridge Design and Land Surveying	WF * Fax Mobile Email Web	918-437-0282 918-437-0455 918-671-4465 julie@guyengr.com www.guyengr.com	10759 E. Admiral Pl. Tulsa, OK 74116
8/09 ISAAC'S SURVEYING SERVICE Kenny A. Isaacs, Owner Land Surveying, Design Surveying Construction Staking, Right of Way Staking, Writing Legal Descriptions	NM * Fax Mobile Email	918-245-0456 918-245-8723 918-638-3204 Kenny@isaacssurveying.com	5 W 42 nd Street Sand Springs, OK 74063
05/12 Jackson & Jackson Engineering, Inc. Derek Jackson, President Engineering	BM * Fax Mobile Email	405-378-7222 405-378-7444 405-250-0967 joyfuljacksons@sbcglobal.net	3125 S.W. 97 th Street Oklahoma City, Oklahoma 73159
6/10 KB ENVIRONMENTAL SCIENCES, INC. L. Carrol Bryant, President Consulting: Transportation Related Air Quality, Noise Hazardous Materials and Industrial Hygiene.	WF * Fax Mobile Email Web	727-578-5152 727-578-5210 727-776-4766 CBryant@KBEnv.com www.KBEnv.com	9500 Koger Blvd., Suite 211 St. Petersburg, FL 33702
06/12 KHAFFRA Engineering Consultants, Inc. Valentino Bates, President Construction Management	BM * Fax Mobile Email Web	404-525-2120 404-525-3611 404-693-8228 smason@khafra.com www.khafra.com	230 Peachtree Street N.W., Suite 200 Atlanta, Georgia 30303

05/12 KIRBY APPRAISAL SERVICE Mary Kirby Real Estate Appraisal, Title Research	WF * 580-388-4815 Fax 580-388-4815 Mobile 580-695-4642 Email mkirby@pldi.net	Post Office Box 65 Lamont, OK 74643
9/10 KONERU CONSULTING SERVICES, PLLC Srihari Koneru Engineering	AIM * 405-761-8620 Fax 405-728-2709 Email kcsllc@cox.net	13116 Box Canyon Road Oklahoma City OK 73142
06/12 Kwame Building Group, Inc. Anthony Thompson, President/CEO Construction Management	BM * 314-754-5632 or 314-862-5344 Fax 314-862-1855 Email jrandall@kwamebuildinggroup.com Web www.kwamebuildinggroup.com	1204 Washington Avenue, Suite 200 St. Louis, Missouri 63103
07/12 Lancorp, Inc. d/b/a LLS, Inc. Belkis Lane, President Electrical Engineering, Mechanical Engineering, Plumbing Engineering, Construction Administration (Buildings)	HF * 918-392-0911 Fax 918-392-0912 Email whitneywhite@lancorpengineering.com Web www.lancorpengineering.com	1552 South Lewis Avenue Tulsa, Oklahoma 74104-4920
05/10 Leslie Saunders Insurance Agency, Inc. Leslie Saunders, President Insurance Agent	WF * 813-949-8964 or 434-293-7298 Fax 434-293-8016 Email browdon@lsimi.com Web www.lsimi.com	949 Fields of Boaz Drive Charlottesville, VA 22903
7/10 Martinez Geospatial, Inc. Anthony Martinez, CEO Aerial Mapping, Digital Orthophotos, Topographic & Planimetric Mapping, GIS Digital Scanning	HM * 952-698-0230 Fax 952-698-0234 Email lauram@mtzcorp.com Web www.mtzgeo.com	8011 34 th Avenue South, Suite C47 Minneapolis, MN 55425
10/10 MARY A. LYNCH Mary A. Lynch, Owner Aviation Consulting	WF * 817-478-3308 Email Malynch316@aol.com	5719 Overridge Dr. Arlington, TX 76017-1139
6/09 MESHEK & ASSOCIATES, PLC Janet Meshek, President Civil & Water Resource Engineering, Geographic Information Systems	WF * 918-392-5620 Fax 918-392-5621 Mobile 918-688-1400 Email jmeshek@meshekengr.com	1437 S. Boulder Ave., Suite 1080 Tulsa, OK 74119-3634
MINORITY BUSINESS ENTERPRISE AND CONSULTANT CENTER, LLC Dr. Wayne Lawson Business Consulting	BM * 405-702-1753 Email wlawson@okcmbecc.org	5350 South Western Avenue, Suite 401 Oklahoma City, Oklahoma 73109
3/09 JANE MOBLEY ASSOC., INC. Jane Mobley Public Involvement, Public Relations	WF * 816-472-1930 Fax 816-472-1926 Email jmucke@janemobley.com	116 W. 3 rd St., Suite 102 Kansas City, MO 64105

8/11
MONTGOMERY CONSULTING GROUP, INC. * WF
Monty Getty 407-539-7030 341 N. Maitland Blvd., Suite 340
Transportation/Aviation Fax 407-539-7035 Maitland FL 32751
Consulting & Planning Mobile 407-620-5787
Email monty.getty@mcgi-us.com
Web www.mcgi-us.com

1/10
NAVAID LIGHTING ASSOC., INC. WF
Dedra Rainey, President * 662-869-8655 141 Autumn Glenn Road
Airfield Lighting Consulting, Fax 662-869-0065 Saltillo, MS 38866
Design Assistance, Testing & Training Mobile 662-322-6592
Email dedra@navaidlighting.com
Website www.navaidlighting.com

04/12
NEEL, HARVELL & ASSOC., P.C. NM
P. Doug Harvell, President * 918-775-7731 P.O. Box 381
Engineering Fax 918-775-5081 Sallisaw, OK 74955
Mobile 479-806-0575
Email harveng@diamondnet.us

03/12
NICKLE & ASSOCIATES, INC. NM
Gregory Nickle, President * 918-664-5411 108 South 109th East Place
Civil Engineering, Land Surveying Fax 918-664-5425 Tulsa, Oklahoma 74128-1646
Mobile 918-810-4540
Email gnickle@naiengineers.com
Web naiengineers.com

4/11
THE OHMEGA GROUP, LLC BM
Mark Morley, President * 904-807-6512 1652 San Marco Blvd.
Planning, Design, and Engineering for Fax 904-810-5443 Jacksonville, FL 32207
Electrical, Mechanical, Plumbing, and Mobile 904-710-9245
Fire Protection Services Email gmorley@ohmegagroup.com
Web www.ohmegagroup.com

12/10
OPES, INC. HM
Tomas Diaz, President * 405-360-2911 330 W. Gray St., Ste. 170
Environment Consulting, Fax 405-360-2914 Norman, OK 73069
Fuel Tanks (AST/UST) Removal/ Mobile 405-659-5423
Installation /Upgrade/General Email tadopes@sbcglobal.net
Maintenance, Remediation Services,
Soil & Groundwater Sampling/Monitoring
Well Installation/Subsurface Investigation/
Remediation, Professional Engineer
Services, SPCC, SWP3, Lead Based Paint
Abatement Residential/Commercial Buildings,
Fencing, Demolition, Incidental Concrete Construction.

5/10
PATHWAY SERVICES, INC. HM
Rudy Blanco, President * 918-259-9883 P O Box 472105
Collect & process road survey data, Fax 918-259-9912 Tulsa, OK 74147
sell & service data collection vehicles Email rblanco@pathwayservices.com
Web www.pathwayservices.com

2/11 PDP ASSOCIATES, INC. Prahlad Pant, PHD, President Intelligent Transportation Systems, Smart Work Zone Systems, Traffic Management	AIM * 770-352-0880 Fax 770-352-0881 Mobile 513-226-6009 Email pant@pdpassociates.com Web www.pdpassociates.com	PO Box 888264 Atlanta GA 30356
2/11 PSRI TECHNOLOGIES, LLC Natasha Conley, CEO Information Technology Services, Call Center Support	BF * 573-636-9696 Fax 573-636-5407 Web www.psritech.com	113 Eastland Drive Jefferson City, MO 65101
2/11 PEACHTREE TELECOMMUNICATIONS INTERNATIONAL, LLC Sandra Kay Stewart, President Distributor Telecommunication Equipment	WF ** 770-242-1970 Fax 770-242-0818 Mobile 770-317-2855 Email kaystew@peachtreetelecom.com Web www.peachtreetelecom.com	11465 Johns Creek Pkwy Suite 350 Duluth, GA 30097
9/11 PINNACLE CONS. MGMT GROUP, INC. Lisa Harrison, President Right-of-Way Acquisition, Relocation, Program Management	WF * 405-879-0600 Fax 405-879-0474 Email Lharrison@pinnaclegroup.ws	5534 North Western Oklahoma City, OK 73118
8/11 PUBLIC INFORMATION ASSOCIATES Judy Meyer, Owner Public Outreach, Involvement and Communications Strategy Development, Web Content, Media Relations, Stakeholder Communications, Consensus Building	WF * 214-495-0403 Mobile 214-499-4661 Fax 214-495-0479 Email: judy.meyer@publicinformationassociates.com Web: www.publicinformationassociates.com	PO Box 570 Allen, Texas 75013
05/12 Red Plains Professional, Inc. Mark Farris, President Civil Engineering, Transportation Planning, GIS, Environmental Assessments	NM * 405-341-4031 Fax 405-341-4037 Mobile 405-274-4011 Email mark@red-plains.com Web www.red-plains.com	2933 South Bryant Avenue Edmond, Oklahoma 73013
09/11 ROSALES + PARTNERS, INC. Miguel Rosales, President Architectural Firm Specializing In Aesthetic Conceptual Design of Bridges; Facilitators For Community Participation in the Design Of Bridges And Transportation Facilities.	HM * 617-247-7499 Fax 617-247-7139 Email mrosales@rosalespartners.com Web www.rosalespartners.com	37 Newbury Street, 6 th Floor Boston, MA 02116
12/11 SHARON GREENE & ASSOCIATES Sharon Greene, Principal Transportation Planning & Financial Analysis	WF * 949-715-0205 Fax 949-715-0204 Email s.greene@sharongreene.org	1100 S. Coast Hwy Suite, 318 Laguna Beach, CA 92651
03/12 GINA SOFOLA & ASSOCIATES, INC. Gina Sofola, President Industrial & Facilities Management	BF * 203-613-9471 Fax 405-272-0313 Email gsofola@sofolaassociates.com Web www.sofolaassociates.com	4601 Casper Drive Oklahoma City, OK 73111

10/10 SPITZER & ASSOCIATES, INC. Candy Spitzer, President Right-of-Way: Acquisition, Relocation, Title Services, Project Management Oversight, Asset Management, Property Management	WF * Fax Email Web	512-478-8660 512-478-8462 candy@spitzerassociates.com www.spitzerassociates.com	1406 Hether Street Travis TX 78704
04/12 SOLID NETWORK SOLUTIONS LLC Maria Curcio Info tech svcs., network security svcs., Telecommunications, Construction Material Broker	WF *** Fax Email	732-863-7080 732-863-6614 mcurcio@solidnetsol.com	326 Brandon Blvd. Freehold NJ 07728
12/10 STARR DESIGN GROUP, INC. Thomas McKenna, President Electrical Engineering, Architecture, Program/Project/Construction Management, Design of Signs, Signaling, and Illumination	NM * Fax Mobile Email Web	918-599-7770 918-384-3186 918-381-8642 tom@aegmep.com www.sdgmep.com	1401 S. Denver Suite A Tulsa, OK 74119
6/09 TANNER CONSULTING, LLC Dan Tanner Civil Engineering, Construction Staking, Land Surveying, Land planning Architecture, Landscape Architecture	NM * Fax Email	918-745-9929 918-745-9969 jm@tannerbaitshop.com	5323 S. Lewis Ave. Tulsa, OK. 74105
3/11 TECHNICAL INNOVATIVE CONCEPTS, INC. dba TIC Jan Jenkins Security Consulting and Construction, Fencing, and Guardrail	BF * Fax Mobile Email Web	405-604-5142 405-604-5143 405-503-7428 TIC2000@sbcglobal.net www.ticok.com	5350 S. Western Suite 400 Oklahoma City, OK 73109
10/10 THUNDERHEAD TESTING Cynthia Lynn, Owner Consulting	WF * Mobile Email	918-366-3818 404-368-9278 thelynns06@cox.net	1720 E. 137 th Street Bixby OK 74008
5/10 TOM L. BROWN INSURANCE, LLC Tom L. Brown, Owner Insurance, Bonding.	NM * Fax Mobile	918-492-1777 918-492-0537 918-809-4533	6846 S. Canton, Ste. 250 Tulsa, OK 74136-3400
12/09 TOP CLEAN, INC. Cletus Franklin, President Commercial Janitorial and Carpet Clearing Services	BM * Fax Mobile Email Web	405-733-3630 405-733-9627 405-833-2258 topcleaninc@cox.net www.topcleaninc.com	PO Box 50234 Midwest City, OK 73140

<p>4/11 TRANSSOLUTION, LLC Belinda Hargrove, Managing Principal Transportation Planning and Consulting, (Analysis of Airport Terminal Facilities, Airfield Runway & Airspace Capacity Analysis, Operations Research Analysis)</p>	<p>WF * 817-359-2958 817-359-2950 Fax 817-359-2959 Email bhargrove@transsolutions.com Web www.transsolutions.com</p>	<p>PO Box 155486 Fort Worth, TX 76155</p>
<p>2/10 VIEUX & ASSOCIATES, INC. Jean Vieux Engineering Design: Hydrology and Hydraulics for Roadway and Bridge; Geographical Information Systems; and Radar Rainfall Applications</p>	<p>WF * 405-325-1818 Fax 405-325-7925 Mobile 405-412-6259 Email jean.vieux@vieuxinc.com</p>	<p>350 David L. Boren Blvd., Suite 2500 Norman, OK 73072-7267</p>
<p>05/12 WHAYNE AND SONS ENTERPRISES, INC. Richard Wayne, Jr., President Janitorial Services</p>	<p>BM * 303-375-8000 Fax 303-375-9215 Email whayne1@aol.com</p>	<p>10515 East 40th Avenue Denver, CO 80239</p>
<p>03/12 WHITEKILLER ENTERPRISES, LLC Jimmie Whitekiller Real Estate Appraisal, Real Estate Broker</p>	<p>NF * 918-775-0588 Fax 918-775-0588 Email killer@intellex.com</p>	<p>PO Box 86 Sallisaw, OK 74955</p>
<p>8/10 D. WILSON CONSULTING GROUP, LLC Deidre Kyle, Principal Management Consulting</p>	<p>BF * 904-757-9300 Fax 904-652-2677 Mobile 904-699-4871 Email ddkyle@dwilsongroup.net Web www.dwilsongroup.net</p>	<p>309-1 Ponce Blvd. Jacksonville FL 32218</p>

**OKLAHOMA DEPARTMENT OF TRANSPORTATION
 DISADVANTAGED BUSINESS ENTERPRISES
 AIRPORT CONCESSIONAIRES (ACDBE)**

* SUBCONTRACTOR, SERVICES, MFG./ FABRICATOR
 NORMALLY RECEIVING 100% FOR DBE GOAL.

** MATERIAL SUPPLIER NORMALLY RECEIVING 60% FOR DBE GOAL

*** BROKER NORMALLY RECEIVING 0% FOR DBE GOAL

<p>1/10 FIRST CLASS CONCESSIONS, INC. Tansneem Vakharia Airport Concessionaire: Food & Beverage</p>	<p>AIF * 858-487-8984 Fax 858-487-8987 Mobile 858-472-2189 Email vakharia@firstclassconcessions.com</p>	<p>12118 Ferncrest Place San Diego CA 92128</p>
<p>10/11 FRESQUEZ CONCESSIONS, INC. Charles Fresquez, President Airport Concessionaire: Full Service and Fast Food Restaurant, Beverage (Alcohol)</p>	<p>HM * 505-884-7484 Fax 505-880-1015 Email fresquezinc@qwest.net</p>	<p>8218-B Louisiana NE Albuquerque, NM 87113</p>

10/09 THE HAIRPORT SALON Donna Moose Airport Concessionaire: Barbering	WF * 918-832-0394 Mobile 918-638-0394	7777 E. Apache Tulsa OK 74115
03/12 KAMBER'S AT THE AIRPORT, LLC Janet Kamber Price, Manager Airport Concessionaire: Retail	WF * 405-751-1060 Mobile 405-641-8033 Email jprice3416@cox.net	3416 Red Rock Road Oklahoma City, OK 73120
12/09 MINUTE MASSAGE, INC. Helen Wormuth Airport Concessionaire: Massage Services	WF * 918-258-7959 Fax 918-258-7959 Email hnwisdom@cox.net	1024 West Norman Broken Arrow, OK 74012
5/10 SHOE SMILES Boston Torrence, Owner Airport Concessionaire: Shoe Shine	BM * 918-838-1354 Mobile 918-838-1354 Email shoesmiles@hotmail.com	808 North New Haven Tulsa OK 74115

www.okladot.state.ok.us

Oklahoma Department of Transportation
Regulatory Services Division
200 N.E. 21st 1-C-5
Oklahoma City, Ok 73105

www.okladot.state.ok.us 405-521-6046 1-800-788-4539

Regulatory Services Staff

Susan McClune, Transportation Manager (405)521-6046 smcclune@odot.org
 Charity Mehagan, Administrative Programs Officer (405)521-6046 cmehagan@odot.org
 Martha Garcia, DBE Supportive Services Coordinator (405)521-6411 mgarcia@odot.org
 Katrina Fire, DBE Reviewer (405)521-3379 kfire@odot.org
 Andy Penney, Contract Compliance Officer (405)522-3174 apenney@odot.org
 Linda Stoltz, Contract Compliance Officer (405) 521-2082 lstoltz@odot.org

(405)521-6046
FAX (405)522-2136
1-800-788-4539

NEW FIRMS ADDED JUNE 2009

Interstate Sealant and Concrete, Inc.
Lancorp, Inc. d/b/a LLS, Inc.

FIRMS REMOVED JUNE 2009

Two Suns Contracting, Inc.

Attachment 3

Sample Monitoring and Enforcement Mechanisms

The Trust has available several remedies to enforce the ACDBE requirements contained in its contracts, including, but not limited to, a breach of contract action pursuant to the terms of the contract.

In addition, the Federal Government has available several enforcement mechanisms that it may apply to firms participating in the ACDBE problem, including, but not limited to, the following:

1. Suspension or debarment proceedings pursuant to 49 CFR Part 23;
2. Enforcement action pursuant to 49 CFR Part 31; and
3. Prosecution pursuant to 18 USC 1001.

The Trust will implement various mechanisms to monitor program participants to ensure they comply with Part 23, including, but not limited to the following:

1. We will insert the following provisions into concessions agreements and management contracts:
 - A. In the event that Contractor shall fail to perform, keep, and observe any of the terms, covenants, or conditions herein contained on the part of the Contractor to be performed, kept and observed, Trust may give written notice to Contractor to use due diligence to correct such condition or default; and, if Contractor shall not commence and use diligence to correct such condition or default for thirty (30) days after receipt of such notice, Trust may, after the lapse of thirty (30) days notice and prior to the correction or curing of such default or condition, terminate this Agreement by giving ten (10) days notice and the term hereby demised shall thereupon cease and expire at the end of such ten (10) days in the same manner and effect as if it were the expiration of the term. Except as to any rental payments under this Agreement, no default on the part of the Contractor shall be deemed to continue so long as Contractor shall have promptly taken action to correct the same and shall be diligently prosecuting such action. In any case where Trust shall be entitled hereunder to terminate this Agreement for failure of the Contractor to correct or cure a default after due notice as hereinabove provided in this paragraph, Trust may, as an alternative to termination of the Agreement, perform the obligation imposed under this Agreement for the account of and at the expense of the Contractor, and the same shall be paid by Contractor as additional rent within thirty (30) days following the date of receipt by Contractor of an invoice for the said reasonable expense.
 - B. Contractor shall observe and comply with any and all present and future requirements of the constituted public authorities and with all federal, state, or local statutes, ordinances, regulations, and standard rules

applicable to Contractor or its use of the Airport premises, including by way of example, but not of limitation, all general rules and regulations promulgated from time to time by the Director of Airports of the City of Oklahoma City in connection with the administration of the Airport.

2. We will implement our compliance and monitoring procedures by reviews, to be conducted at least annually, of the percentages of gross revenues allocable to ACDBEs. At any time a contractor fails to reach its contractually required goal, said contractor will be required to substantiate its good faith efforts to return to compliance. These reports will be required on a quarterly basis until compliance is achieved or until it is determined that the contractor's efforts are insufficient and the procedures described in "Good Faith Efforts on Concession Specific Goals (23.25(e)(1)(iii), (iv))" above are implemented.

Attachment 4

Section 23.45: Overall Goal Calculation for Concessions Other Than Car Rentals

Amount of Goal

The Trust's overall goal for concessions other than car rental during the period beginning October 1, 2009, and ending September 30, 2012, is the following: 11% per year of the total gross receipts for concessions at Will Rogers World Airport. The following are not included in the total gross receipts for concessions: (a) the gross receipts of car rental operations, (b) the dollar amount of a management contract or subcontract with a non-ACDBE, (c) the gross receipts of business activities to which a management contract or subcontract with a non-ACDBE pertains, and (d) any portion of a firm's estimated gross receipts that will not be generated from a concession.

There is minimal new concession opportunities anticipated during this goal period, which may include an agreement for an automated vending machine service. This contract could represent approximately 1% of our total non-rental car concession revenues. Therefore, any incremental goal based on this agreement would be insignificant. We will, however, endeavor to provide ACDBEs with any and all opportunities to obtain these concessions as required by Part 23.

If a new concession opportunity arises prior to the end of this goal period and the estimated average of annual gross revenues are anticipated to be \$200,000 or greater, the Trust will submit an appropriate adjustment to the overall goal. This will be submitted to FAA for approval at least 6 months before executing the new concession agreement. (23.45(i))

The Trust has determined that its market area is equivalent to the Oklahoma City Metropolitan Statistical Area. This is the geographical area in which the substantial majority of firms which seek to do concessions business with the Airport are located and the geographical area in which the firms receive a substantial majority of concessions related revenues are located. However, in the case of certain concession opportunities, this area may be widened to include the entire state or nation, dependent upon circumstances.

Methodology used to Calculate Overall Goal

Because the Trust is currently obligated under several contracts, the two largest of which will not expire during this three-year period and which together account for 81% of non-rental car concession revenue, calculation of goals under the two-step formula is rendered moot during this goal-setting period.

The contracts with the providers of news/gifts and food/beverages require ACDBE participation. Therefore, it is our intention to use these percentages to calculate our goals for this goal-setting period.

Based upon prior year's experience, the contractually required percentage participations by the news/gifts and food/beverage providers have yielded an overall goal of 11.7% therefore, it appears reasonable to set the Trust's goal at the full amount, as other potential ACDBEs exist and would be counted toward our goals were they certified. ACDBE participation on concession leases that did not have an ACDBE requirement would have amounted to .16% of the total concession revenues to the Trust had the concessionaires been properly certified, which is being encouraged by the ACDBELO.

Concession Specific Goals (23.25 (c)(e)(1)(iv))

The Trust will use concession specific goals to meet any portion of the overall goals that the Trust does not project being able to meet using race-neutral means. Concession specific goals are established so that, over the period to which the overall goals apply, they will cumulatively result in meeting any portion of our overall goal that is not projected to be met through the use of race-neutral means.

We will establish concession specific goals only on those concessions that have direct ownership arrangements (except car rentals), sublease, or subcontracting possibilities. We will require businesses subject to ACDBE goals at the Airport (except car rental companies) to make good faith efforts to explore all available options to meet goals, to the maximum extent practicable, through direct ownership arrangements with DBEs (23.25 (f)).

We need not establish a concession specific goal on every such concession, and the size of concession specific goals will be adapted to the circumstances of each such concession (e.g., type and location of concession, availability of ACDBEs).

If the objective of a concession specific goal is to obtain ACDBE participation through direct ownership with an ACDBE, the Trust will calculate the goal as a percentage of the total estimated annual gross receipts from the concession. (23.25(e)(1)(i))

If the concession specific goal applies to purchases and/or leases of goods and services, the Trust will calculate the goal by dividing the estimated dollar value of such purchases and/or leases from ACDBEs by the total estimated dollar value of all purchases to be made by the concessionaire. (23.25(e)(1)(ii))

Consultation with Stakeholders (23.43)

Prior to submitting this goal to the FAA, the ACDBE liaison officer contacted stakeholders including Oklahoma Minority Supplier Development Council, the Urban League of Greater Oklahoma City, Oklahoma Native American Business Development Center, and current concessionaires, to discuss ACDBE opportunities at the Airport and ways that we can be accessible to them and their constituents. Unfortunately, they are not currently aware of any of their clientele or associates who operate concession-type activities, as their contact lists lean toward building-trade providers.

Once this Plan is approved by the Trustees of the Oklahoma City Airport Trust, it will be distributed to local organizations and will be adjusted for their comments, if warranted.

Breakout of Estimated Race-Neutral & Race Conscious Participation
Section 23.51

The Trust will meet the maximum feasible portion of its overall goal by using race-neutral means of facilitating ACDBE participation. The Trust uses the following race-neutral measures to increase ACDBE participation. We understand that we will be expected to actually take these steps, and this is not merely a paper exercise.

1. Locating and identifying ACDBEs and other small businesses who may be interested in participating as concessionaires under 49 CFR Part 23;
2. Notifying ACDBEs of concession opportunities and encouraging them to compete, when appropriate;
3. When practical, structuring concession activities so as to encourage and facilitate the participation of ACDBEs;
4. Ensuring that competitors for concession opportunities are informed during pre-solicitation meetings about how the Trust's ACDBE program will affect the procurement process; and
5. Providing information concerning the availability of ACDBE firms to competitors to assist them in obtaining ACDBE participation.

We estimate that, in meeting our overall goal of 11%, we will obtain 1% from race-neutral participation and 10% through race-conscious measures.

The following is a summary of the basis of our estimated breakout of race-neutral and race-conscious ACDBE participation:

1. Despite having a goal of 2% for the past few years, we were unable to meet the goal. However, in the past year we reached a goal of 1.1% (\$19,686.84/\$1,758,367.75), due in part to one ACDBE who is certified in the State of Oklahoma, and has been an Airport concessionaire participant since 2007;
2. ACDBE participation on concession leases that did not have an ACDBE requirement would have amounted to .16% (\$1119.96/\$700,168.60) of the total ACDBE concession revenues to the Trust had the concessionaires been properly certified; and
3. There is one other ACDBE who is certified in the state of Oklahoma, and that participant is an Airport concessionaire pursuant to a race-conscious measure;

We project that race-neutral measures, standing alone, are not sufficient to meet an overall goal and will use the following race-conscious measures to meet the overall goal:

1. Establish concession specific goals for particular concession opportunities;
2. Negotiate with potential concessionaires to include ACDBE participation through direct ownership arrangements or measures in the operation of the concession; and

3. With prior FAA and Trust Attorney approval, investigate any other methods that take a competitor's ability to provide ACDBE participation into account in awarding a concession.

In order to ensure that our ACDBE program will be narrowly tailored to overcome the effects of discrimination, if we use concession specific goals, we will adjust the estimated breakout of race-neutral and race-conscious participation as needed to reflect actual ACDBE participation (see 26.51(f)), and we will track and report race-neutral and race conscious participation separately. For reporting purposes, race-neutral ACDBE participation includes, but is not necessarily limited to, the following: ACDBE participation through a prime contract that an ACDBE obtains through customary competitive procurement procedures, ACDBE participation through a subcontract on a prime contract that does not carry ACDBE goal, ACDBE participation on a prime contract exceeding a concession specific goal, and ACDBE participation through a subcontract from a prime contractor that did not consider a firm's ACDBE status in making the award.

We will maintain data separately on ACDBE achievements in those contracts with and without concession specific goals, respectively.

Attachment 5

Section 23.45: Overall Goal Calculation for Car Rentals

Amount of Goal

The Trust's overall goal for car rentals during the period beginning October 1, 2009, and ending September 30, 2012, is the following: 10% of the total gross receipts of car rental operations at Will Rogers World Airport. Staff is currently in the process of preparing bid documents, where new agreements are expected to commence January 1, 2010.

The concession opportunities anticipated during this goal period are the opening of all 7 rental car counters in the Terminal Building for new bids. This will allow us to revisit the ACDBE requirements to include participation by purchases of cars and/or services. If a new car rental concession opportunity arises prior to the end of this goal period and the estimated average of annual gross revenues are anticipated to be \$200,000 or greater, the Trust will submit an appropriate adjustment to the overall goal. This will be submitted to FAA for approval at least 6 months before executing the new concession agreement. (23.45(i)).

The Trust has determined that its market area is different for the potential participation from the car rental companies/franchisees themselves and from the possible vendors that they may use. We anticipate meeting our goal through participation by the car rental companies' purchases of goods rather than services, and the market for some of these services is probably national.

Methodology used to Calculate Overall Goal

Goods and Services

We can meet the percentage goal by including the purchase from ACDBEs of goods and services used in businesses at the Airport. The dollar value from purchases of goods and services from ACDBEs may be added to the numerator, and the dollar value from purchases of goods and services from all firms (ACDBEs and non-ACDBEs) may be added to the denominator.

Step 1: 23.51(c)

We determined the base figure for the relative availability of car rental ACDBEs. The base figure was calculated as follows:

Option 1:

$$\begin{array}{rcl} 0 \text{ (Base figure)} & = & 0 \text{ (Ready, willing, and able car rental ACDBEs in the} \\ & & \text{market area)} \\ & & \text{-----} \\ & & 0 \text{ (All ready, willing, and able car rental firms in the} \\ & & \text{market area)} \end{array}$$

The data source or demonstrable evidence used to derive the numerator was the Oklahoma Department of Transportation's web site, which identifies no local certified car rental ACDBEs.

The data source or demonstrable evidence used to derive the denominator was a list of eligible concessionaires in the local market. In order to provide the most appropriate service to Airport customers, our current contract requires Bidders to be a nationally recognized car rental company or an authorized franchisee. Judging from previous year's participation, there do not appear to be any local owners/franchisees who meet the criteria.

When we divided the numerator by the denominator, we arrived at the base figure for our overall goal for car rental concessions of 0% under the current contracts, which do not require any ACDBE participation.

In the future, our entire goal is likely to be met through the concessionaires' purchases of goods and services from DBEs. Because we have not yet begun negotiations/investigations regarding the new agreements, we do not have any way to estimate the current concessionaires' potentially eligible purchases, as they may be dependent upon their existing purchase contracts. During this goal period we will be consulting with current and future concessionaire's to request information regarding their current situations. If necessary, we will revise our second and third year goals based upon their answers to letters and information they provide during informational meetings for potential bidders. We would require the concessionaire to achieve at least a 10% goal for purchases of goods and services from DBEs.

Consultation with Stakeholders (23.43)

Prior to submitting this goal to the FAA, the ACDBE liaison officer consulted with stakeholders including Oklahoma Minority Supplier Development Council, the Urban League of Greater Oklahoma City, Oklahoma Native American Business Development Center, and current concessionaires. We discussed ACDBE opportunities at the Airport and ways that we can be accessible to them and their constituents. Unfortunately, they are not currently aware of any of their clientele or associates who operate relevant activities, as their contact lists lean toward building-trade providers.

Once this Plan is approved by the Trustees of the Oklahoma City Airport Trust, it will be distributed to local organizations and will be adjusted for their comments, if warranted.

Breakout of Estimated Race-Neutral & Race Conscious Participation
Section 23.51

The Trust will meet the maximum feasible portion of its overall goal by using race-neutral means of facilitating ACDBE participation. The Trust uses the following race-neutral means to increase ACDBE participation:

1. Locating and identifying ACDBEs and other small businesses who may be interested in participating as concessionaires, or suppliers to concessionaires, under 49 CFR Part 23;
2. Notifying ACDBEs of concession or contracting opportunities and encouraging them to compete, when appropriate;
3. When practical, structuring concession activities and bid documents/contracts so as to encourage and facilitate the participation of ACDBEs;
4. Ensuring that competitors for concession opportunities are informed during pre-solicitation meetings about how the Trust's ACDBE program will affect the procurement process; and
5. Providing information concerning the availability of ACDBE firms to competitors to assist them in obtaining ACDBE participation.

We estimate that, in meeting our overall goal of 10%, we will obtain 0% from race-neutral participation and 10% through race-conscious measures. This estimate was derived from the fact that no past participation has occurred in the absence of race-conscious measures. This estimate may change however, once we are able to ascertain the amount of race-neutral participation already taking place through the purchases of goods and services by concessionaires.

Since we project that race-neutral measures, standing alone, are not sufficient to meet an overall goal, we will use the following race-conscious measures to meet the overall goal:

1. Establish concession specific goals for the rental car concession opportunity that will occur in the next year;
2. Negotiate with potential concessionaires to include ACDBE participation, through direct ownership arrangements or measures, in the operation of the concession; and
3. With prior FAA and Trust Attorney approval, investigate any other methods that take a competitor's ability to provide ACDBE/DBE participation into account in awarding a concession.

In order to ensure that our ACDBE program will be narrowly tailored to overcome the effects of discrimination, if we use concession specific goals, we will adjust the estimated breakout of race-neutral and race-conscious participation as needed to reflect actual ACDBE participation (see 26.51(f)); and we will track and report race-neutral and race conscious participation separately. For reporting purposes, race-neutral ACDBE participation includes, but is not necessarily limited to, the following: ACDBE participation through a prime contract that an ACDBE obtains through customary competitive procurement procedures; ACDBE participation through a subcontract on a

prime contract that does not carry ACDBE goal; ACDBE participation on a prime contract exceeding a concession specific goal; and ACDBE participation through a subcontract from a prime contractor that did not consider a firm's ACDBE status in making the award.

We will maintain data separately on ACDBE achievements in those contracts with and without concession specific goals, respectively.

Attachment 6

Forms 1 & 2 for Demonstration of Good Faith Efforts

FORM 1: AIRPORT CONCESSION DISADVANTAGED BUSINESS ENTERPRISE (ACDBE) UTILIZATION

The undersigned bidder/offeror has satisfied the requirements of the bid/proposal specification in the following manner (please check the appropriate space):

_____ The bidder/offeror is committed to a minimum of _____ % ACDBE/DBE utilization on this contract.

_____ The bidder/offeror (if unable to meet the ACDBE goal of _____ %) is committed to a minimum of _____% ACDBE utilization on this contract and submitted documentation demonstrating good faith efforts.

Name of bidder/offeror's firm: _____

State Registration No. _____

By _____ Title _____
(Signature)

FORM 2: LETTER OF INTENT

Name of bidder/offeror's firm: _____

Address: _____

City: _____ State: _____ Zip: _____

Name of ACDBE firm: _____

Address: _____

City: _____ State: _____ Zip: _____

Telephone: _____

Description of work to be performed/goods or services to be supplied by ACDBE/DBE firm:

The bidder/offeror is committed to utilizing the above-named ACDBE/DBE firm for the work described above. The estimated dollar value of this work is \$ _____.

Affirmation

The above-named ACDBE/DBE firm affirms that it will perform the portion of the contract for the estimated dollar value as stated above.

By _____
(Signature) (Title)

If the bidder/offeror does not receive award of the prime contract, any and all representations in this Letter of Intent and Affirmation shall be null and void.

(Submit this page for each ACDBE subcontractor/DBE supplier.)

Attachment 7

Regulations: 49 CFR Part 23